

# Yalding & Laddingford

Parish & Church Magazine

£1.00 per issue



**April 2021**

St.Peter & St.Paul, Yalding with St.Mary's, Laddingford

**Church website**

**[www.yaldingchurches.co.uk](http://www.yaldingchurches.co.uk)**

Further information can be obtained by contacting

Father Paul Kish or the Churchwardens

(contact details are in the magazine).



## FRONT COVER PHOTOGRAPH

### The Angel with the Cross. Ponte Sant'Angelo Rome

*Valerie Lovett*

In 2017, I went to Rome to participate in a photography and spirituality study tour.

I was based at the Methodist Ecumenical Office located next to the Ponte Sant' Angelo and steps from the Vatican.

The Ponte Sant' Angelo is often referred to as the 'Bridge of Angels' and was designed by sculptor Gian Lorenzo Bernini.

Ten strikingly beautiful angel sculptures line the spectacular travertine bridge (pictured below).

Each sculptured angel symbolises a part of the story of Jesus Christ's suffering and death by crucifixion.

Being so close to such famous sights meant I had to get up at dawn to be able to beat all the tourists and take my time in photographing the bridge and the angels.

This opportunity meant the results, with the quietness and light, gave some spectacular results and the memory for me of a beautifully spiritual visit.



## MAGAZINE CONTENTS

Cover Photograph Article	2
<i>Angel with the cross</i>	
Parish Letter	3
Church Services	4
Helen Grant	4
Pub News	5
<i>Walnut Tree &amp; Chequers</i>	
Cold Water Swimming	6
Hari Covert Recipe	7
Yalding Library	8
Your Announcements	9
<i>Bye bye Dan</i>	
Editor's Notes	9
Yalding Post Office	10-11
Roly Poly Poppy Cartoon	11
100 Club	11
Laddingford School	12
Yalding School	13
Yalding PreSchool	14
Teston/Wateringbury PreSchool	14
Yalding Parish Council	15-17
Yalding Garden Society	18
Gathering Rushes	19
<i>Article by Jennifer Raikes</i>	
Yuletide Market	20
Yalding Tree Guardians	21
Yalding Food Bank	21
Yalding Cricket Club	22
Ratty's Tales	23
Yalding/Laddingford FC	23
Advertising	24-37
Yalding Art Group	38
<i>Arts &amp; Crafts Fair</i>	
Village Contacts	39
<i>Tribute to Capt. Sir Tom Moore</i>	40

### EDITOR

June Chapman

[mag@yaldingchurches.co.uk](mailto:mag@yaldingchurches.co.uk)

### ADVERTISING

01622 817315

Lara Franklin

[ylpm.advertising@gmail.com](mailto:ylpm.advertising@gmail.com)

### DIARY

01892 459041

Jenny Scott

07785 974951

### TREASURER

Graham Spillman

01622 813771

### DISTRIBUTION

Martin Williams

01622 815403



## **PARISH LETTER... from Father Paul**

***“Why do you look for the living among the dead?” (Luke 24:5b)***

The festival of Easter lies at the heart of the Christian faith. At Christmas we celebrate that God chooses to come among us as one of us in the Incarnation, but the full mystery of why he does that is revealed through the Crucifixion on Good Friday and the Resurrection on Easter Sunday:

Jesus' sacrifice on the Cross redeems the world, and Love conquers Death. That's quite a story.

It is a story of sorrow and joy, a story of injustice and satisfaction, a story of trauma and recovery, and we experience it every year, coming out on the other side, renewed and restored, into the light of a new dawn, the beauty and brilliance of Easter Day.

It has been one year now since we first began to undergo the effects and consequences of various restrictive measures under lockdown in a pandemic, and none of us has been untouched by the experience. In our church community our life together has been at best erratic, and we have come to realise through what we have lost or struggled to maintain, in person and online, that there are many different reasons why people seek to make it their spiritual home.

It might be that some people appreciate the opportunity for worship and prayer in quiet contemplation or in exuberant praise. For some it is the chance to ring ancient bells in a mediaeval church tower, and for others it is music and singing, or fellowship within community. Still others have a love and appreciation of ancient buildings, or a shared endeavour in serving others through social action, or a chance to mix within an inter-generational communion. But for all of us who gather in church there is a shared story of hope and redemption, an assurance of forgiveness and a new start, a freedom to be ourselves without judgment, and a common sense of purpose in God's Love.

It is tempting, as we pass the anniversary of the beginning of the first lockdown, to look back over the past year with bitterness and recrimination, seeking not so much answers as someone to blame for what we have suffered. Indeed, there has been some of that in the media in recent weeks, and perhaps more to come. But if the life of Jesus is a model for those who follow him, maybe we can set an example that the way forward is to be found in sharing together the work of recovery rather than pointing a divisive finger of guilt at everyone else.

I began this letter with a quotation from one of the angels at the tomb in Luke's Gospel, suggesting to those who had come to anoint Jesus' body that they were looking in the wrong place. They were not to dwell in mourning for what might have been, but to be an active part of what was to come.

And we will not find our future as a community by raking over the coals of the past, but by looking forwards to the new life of a fresh start in the glory of the Resurrection. We hope that you will also want to be a part of what we are called to become, and find your spiritual home.

Happy Easter!

***“He is not here: he has risen.” (Luke 24:6a)***

A handwritten signature in black ink that reads "Fr. Paul". The script is cursive and fluid, with the "Fr." and "Paul" written in a connected style.

# Church Services

## Parish church of St Peter and St Paul

### Regular church services have resumed

(Social distancing rules apply)

09.30	Sundays (in Y)	Holy Communion
11.00	Sundays (in CS)	Holy Communion
18.00	Tuesdays	Evening Prayer (Zoom)
10.00	Wednesdays	Mid-week communion (BCP)

### EASTER WEEK EVENTS

29th March - 4th April

18.00	Mon, Tue, Wed	Compline
20.00	Maundy Thursday	Communion & Vigil

#### Good Friday

10.00	Walk the Way of the Cross: Collier Street to Yalding via St Mary's Laddingford	
14.00	Music & Reflection	for Good Friday
20.00	Service of Light	at Easter Even (Saturday)

#### Easter Day

Communion services will be held at these times

08.00	at St Mary's, Laddingford
09.30	at St Peter & St Paul, Yalding
11.00	at St Margaret, Collier Street

## Yalding Baptist Church

Services by Zoom (ID: 857 4184 1757)

*Sunday Worship is at 10.30 a.m.:*

**EVERYONE WELCOME**

We plan to use Zoom, but could be using the Hall as well.  
All distancing rules will apply.

April 4	Easter Communion
April 11	Visiting Speaker Jennifer Roberts
April 18	All Age service
April 25	Usual service and Kitchen crew (age 11+)

Junior church resources will be available on WhatsApp

### Home Group

Wednesdays at 8.15pm (please ask for Zoom ID):




14th April	Prayer and share
28th April	Bible study (The Book of Acts)

### Contact us and more information

James and Rachel Bushnell 01622 817337 or  
rachbush75@hotmail.co.uk  
yaldingbaptistchurch.my-free.website  
www.facebook.com/yaldingbaptistchurch

## Helen Grant MP for Maidstone and the Weald

I am here to help you in any way that I can. If there is an issue of concern to you, where you believe I can assist, or if you would like to arrange a meeting with me, please email me at **helen.grant.mp@parliament.uk** or telephone **020 7219 7107**.

 **helengrant.org**  
 **@HelenGrantMP**  
 **helengrantmp**



Produced by  
Helen Grant MP,  
House of Commons,  
London SW1A 0AA

James Bushnell

The Yalding Baptist community are pleased to announce that James has been commended by the Baptist Union for recognition as a Baptist Minister.

He will be officially appointed as our Pastor-in-training this month

## PUB NEWS

*In future issues we'd like to give all our pubs the opportunity to contribute. Space will be limited of course, but we hope they will appreciate this small gesture of support for their industry.*

*Lockdown has been hard on Hospitality. We all look for a brighter year to come.*

After a year or two away, we are pleased to welcome the Walnut Tree back to these pages, both as an advertiser, and in this issue, as a host hoping to welcome you back and tempt you in, in the anticipation that a bit of normality will soon return for all.

### The Walnut Tree



*We are... excited beyond belief,* to be welcoming you all back to our wonderful 15th century restaurant and pub.

Tom & Hollie are working hard to create an exciting menu, with fresh, local seasonal delights.

We will be introducing a new wine list, extending our range of gins, the cask ales will be seasonal whilst the lagers remain the same.

Dogs & kids are welcome, as we do the alfresco bit! Undercover in the garden with twinkling lights and candles.

We'll make it as homely as possible for this outdoor period, so you can mingle, "safely distancing" with family and friends.

Don't forget to book, to ensure you get a spot! We can't wait to see you and finally let our pub be a pub!

Ali, Mel, Tom & all the team x

**01622 814266**

### The Chequers, Laddingford

*D-Day at the Chequers will be...  
Monday 12th April - we hope!!*

On a Monday?? Yes, a Monday, and only with outside service until May. **THEN**, with luck, we'll reopen the pub properly.

Pray for good weather first, so we can enjoy the garden together again. Book early to reserve tables.

The menu will be revised for any restrictions in place, and we will still be doing our takeaways in April, including the popular afternoon teas.

Please bear with us, as we may have to react quickly to any heavy April shower, gale, storm - or worse.

We are really looking forward to full re-opening. The lovely Chequers is so quiet without our customers. We can't wait to see you all again, hear the clink of glasses, chatter and laughter... or noisy laughter & bellows in the case of the Racers, that is!.

In the meantime keep safe and we'll see some of you out walking in the Parish or collecting your takeaways.

*Good news from the Pop-Up Rural Cafe*

The organisers have been tremendous over the year delivering "goody bags" to those that used to attend the monthly get-togethers.

They hope to restart their visits again soon. We will post details on the social media sites as soon as we know. **Spread the word!**

And when these mornings resume, please do come along for a chat and a piece of cake!

*Happy 90th Birthday Anne!!*

Last month we were delighted to wish

**Anne Ervin**

**a Very Happy 90th Birthday.**

We hear tell of Banners, Balloons,  
Magical Plants sprouting overnight  
and Flowers *EVERYWHERE* !

**Charles and Tracey**



## SKINNY DIP?? More Chunky Dunk!

**Tracey Leaver**

Open water, wild water and particularly cold water swimming have all had increased mainstream media coverage over the past year.

This has been for several reasons including the need to find places to swim while the pools were closed in lockdown, to take advantage of last year's summer weather and warm(er) waters, and to enjoy the widely acclaimed benefit to mental health as well as to physical health of immersing yourself in cold water.

*Tracey's story continues from last month.....*

After the initial shock I gained more confidence and realised I very much enjoyed swimming outside. But I mustn't forget that the aim was to swim that mile and to reach the end. To make sure I put in the effort I decided to raise money for MacMillan Cancer Support through sponsorship and run a competition on what time I'd swim the mile in.

September was soon upon us and Charles and I took the long drive up to Windermere. I can still vividly remember how nervous – no petrified – I was. We arrived the day before so that we could visit the event site and get my bearings – something I still like to do if possible when doing an event. We met Steve Parry (ex Olympic swimmer and cheeky chap) doing the recording for the TV show that would be broadcast and chatting to him was fun but did nothing to calm my nerves – 1 mile looked a very, very long way.

On the day I was too nervous to eat breakfast but knew I had to have something as “fuel”. On the start line I kept to the back as was told it would be a mad rush at the front and just to take my time – and breath! No sooner as I heard the hooter then I was in the water and I was swimming, it was fantastic – the scenery, the water, the people.

My one and only aim was to

complete the mile, I couldn't let everyone down who'd sponsored me. Then before I knew it I was being helped out at the finish with the biggest smile I'd ever had. I'd done it. I'd raised £2,800 for McMillan and completed the mile in 35.42 minutes.

The gym I belonged to near work had a professional swim coaching club and I took lessons in front crawl. I explained what I wanted to do but the problem was - and in fact still is - I have bad habits and technique that have been ingrained in my swimming from when I was young. But it was here that I met a great coach that would become a friend who has guided and supported me through my swimming journey.

My love of swimming had been renewed and I continued to open water swim. I also signed up to pool swim sessions in the winter to maintain my swim fitness. Several people in the Parish showed an interest in trying open water swimming and The Chequers Otters were formed with several swimming outside for the first time.

But now what I'm finding is that to enjoy the water you don't have to be actually “swimming”. It's not now for me about distance, it's about getting in the water, enjoying the social side of chatting, meeting

your swimming friends and making new ones – and of course the obligatory cake. Open water swimmers are notorious for eating cake, although Michelle, Antony, Neal and I are also quite happy with a good breakfast or fish n' chips after a swim! A quick dip can be just as, if not more satisfying than a 2 hour swim.

Of course there is a note of caution and if you try open water swimming there are steps you must take to ensure your safety, including but not limited to the following: Never swim alone, have a swim buddy or at a minimum someone on shore looking out for you. Ask locals about the best places to swim and read hazard signs

Check out your exit route before entering the water to make sure you can safely get out. Be aware of the different and changing conditions, rivers can be as dangerous as the sea for currents. Before jumping into any water, check for the depth, underwater hazards and temperature. Be aware of cold water shock, even in summer the water may be very cold. Get in slowly and acclimatise your body. Never swim if you feel unwell or have been drinking alcohol. Swim/dip to your limits – be honest with yourself and know when enough is enough – there is always another day.



# Cake and Chocolate...it must be Easter...

Well if you are anything like me during the Lockdowns 1,2 & 3 baking has been very much the order of the day. My social media streams have been full of photos of Banana Bread to Sourdough loaves! As Easter is upon us there are some things that are synonymous with this festive period.

Christmas has its traditional fruit cake or perhaps a Tunis Cake as your alternative choice of festive bake. At Easter time it is a Simnel Cake. This cake apparently dates back to medieval times and is basically a dried fruit cake that is baked with a layer of marzipan in the middle and then a topping of a further marzipan layer.

Decoration however is somewhat contested to be 11 or sometimes 12 marzipan eggs around the top. These are then grilled to a toasted colour (or if you fancy use a blowtorch) These eggs are reputed to represent the 12 Apostles minus Judas (11) or the 12 Apostles & Jesus minus Judas (12). I am a big fan of marzipan so this is my kind of cake.

However, the other food synonymous with Easter is of course Chocolate and so I thought I would share a chocolate based cake as this month's recipe.

I was lucky enough to be given the recipe from an old celebrity chef friend Phil Vickery (a Kentish lad) He used to be sponsored by Carnation (Nestle) and this cake uses their condensed milk as a core ingredient. It is a pretty simple cake to prepare with a real luxurious flavour so hence its decadent tag!

I recently prepared it for my dessert offering on my Hari2Go takeaway that finished off my "Walk on the wild side..." supper as it seemed like the ideal finish.

You can serve it with some tart soft fruit like raspberries or blueberries or perhaps a compote of red berries to cut the richness of the cake. The cake can be stored in the freezer and served direct from there so makes it an ideal standby pudding for when you have to cater for an unexpected guest.

Give it a go and do let me know what you think - feedback is always welcome

Cheers... Hari



## Decadent Chocolate Torte



### Method

In a small bowl combine the crushed biscuits and melted butter then press into the base of a 20cm (8in) spring form cake tin. Chill Well

Place condensed milk and chocolate in a large bowl. Microwave on high power for 1-2 minutes till fully melted or melt over a waterbath. Using electric hand whisk beat well till smooth then leave to cool for a few minutes.

Whisk the cream into the chocolate mix and pour onto the biscuit base. Freeze for 4 hours or overnight.

To serve remove from the freezer and run a warm dry palette knife around the edge of the torte and remove from the tin.

To serve cut with a warm knife dust liberally with cocoa powder and garnish with fresh raspberries or a red berry sauce

### Ingredients

#### *For the Base*

**150g** double chocolate chip cookies crushed

**25g** melted Butter

#### *Filling*

**170g** Carnation Condensed Milk

**225g** Bitter Chocolate (70% cocoa solids)

**142ml** Carton of Double Cream

**Email: [covert.hari@yahoo.co.uk](mailto:covert.hari@yahoo.co.uk)**



**YALDING LIBRARY**  
**Adin Coates House**  
**High Street**  
**Yalding**  
**Kent**  
**ME18 6HU**

*Currently closed due to Covid-19 restrictions*

## Spring into Action

Spring is in the air, the sun is shining (at the moment) and the outside is calling.

That's a great big 'Hallelujah' from me! Time to get your wellies on and do some gardening – maybe?

Personally speaking, I'm a fair-weather gardener – but I did get outside and manage to hack back some brambles recently.

I'm also a shove-it-in-and-see type of gardener so definitely not an expert by any means – but whatever level or age you happen to be, there are more gardening books out there than you can shake a stick at and, what's more, you can still get hold of plenty of them through Kent Libraries.

There are so many to choose from, including books on indoor gardening, but here are a few suggestions that caught my eye on the shelves at Kent History and Library Centre recently – it's not open for browsing and lending just yet, but I'm really hopeful that it will be soon.

### Wild your Garden by the Butterfly Brothers (aka Jim and Joel Ashton)

Transform a paved-over yard into a lush oasis, create refuges to welcome and support native species, or turn a high-maintenance lawn into a nectar-rich meadow to attract bees and butterflies.

You don't need specialist knowledge or acres of land. If you have any outdoor space, you can make a difference to local wildlife and reduce your carbon footprint too.

### The Allotment Diaries

#### A Year of Potting, Plotting and Feasting by Kay Sexton

Anyone who's ever spent their evenings or weekends at the allotment will love Kay Sexton's stories of life at her plot and the entertaining characters that keep her amused throughout the year.

On top of the stories, there's also an abundance of year-round horticultural advice with month-by-month sections on sowing, growing, crop care and allotment tasks.

And when you've finished all the hard work outside, you can always go inside and make her Recipe of the Month.

### 100 Plants That Won't Die in Your Garden by Geoff Tibbals

Plants can be expensive and often they don't grow to look anything like the glorious picture on the label – especially after a cold British Winter – but this book cuts through the horticultural sales pitches by listing 100 plants which are all but indestructible.

Pests will give them a wide berth, they will prosper in any reasonable soil and will stand anything that the UK climate throws at them. That's what the blurb says anyway – fingers crossed!

And here are a couple of ideas for any younger gardeners who are keen to get their hands dirty:

### Grow Your Own Sandwich

Everything you need to know about how to grow your own crop of tomatoes and make a really tasty cheese and tomato sandwich. Now that's definitely got to be worth a try.

### This Book Totally Makes Stuff Grow

Full of great ideas for things to do and make for the very youngest gardeners, from a gardener's belt and super sun visor, to making compost, growing potatoes and making your own Rainbow Sprout Bagels with home grown alfalfa and mung beans.

What's not to like?

You can join the library online to download books for **FREE**.

Find all the latest information on current services in Kent Libraries at:  
[www.kent.gov.uk/leisure-and-community/libraries](http://www.kent.gov.uk/leisure-and-community/libraries)

Enjoy the outdoors everyone and happy reading!  
**Julie West - Librarian**

# YOUR ANNOUNCEMENTS

## John Doctor 1940-2021

I would like to say a HUGE thankyou to all those who have sent me cards, flowers, emails and phoned. To those who have arranged zoom coffees, to those who have walked with me and for all the kindness and prayers - it has really helped me cope at this difficult time of shock and sudden death of my husband John.

He was my friend, my rock and the love of my life.

Thankyou. *Jo Doctor*

## Dr Elizabeth Fincham 1919-2021

Dr. Anthony Fincham has notified us that his mother, Dr. Elizabeth Fincham, GP in Yalding from 1956 to 1986 has died peacefully at her home on the 28th February 2021 aged 98 years.

He has asked for this to be shared with the local community.

We send the family our thoughts and best wishes.

*Yalding Surgery*

## Goodbye Dan - our favourite Postie



Friday, 12th March 2021 was Dan's official last day delivering letters and parcels to his appreciative customers in Yalding and the surrounding areas.

A secret collection was made and Dan was presented with a bottle of Bollinger Champagne and Post Office Gift cards which we feel his wife will enjoy on all levels!!

Dan received lots of good wishes and we'll miss his very friendly face and 'nothing is too much' attitude. Good luck Dan at Boughton Monchelsea and then further North in the future. Our best wishes to you and your family.

*Tim & June - Yalding Post Office*

## EDITORS NOTES

We have two stories to entertain you this month. Tracey is further along with her wild swimming and Jennifer has sent in reed gathering along the Beult in 1974. I can tell you the reeds are still there, so if anyone is inspired to take up this hobby, get in your boat, cut some reeds and get going! They are very sharp and strong, so it would not be for the faint hearted.

On a serious note, it is always sad to hear of someone passing and to their family, their world is a little smaller. My thoughts are with all families in Yalding and surrounding villages who have lost someone these past months.

It will be a year in May since I took on the role of Editor and you may have noticed some style changes - Anyway, our little band of volunteers is as eager as ever to bring you your monthly news from the Parish. We do however, have expenses to pay and we thank all our advertisers for continuing to support us, but we will be asking for a little more from our readers.

If you can spare a donation of £5 to cover costs, we would be very grateful. An envelope is somewhere in this magazine for that purpose. Thankyou loyal readers for your continuing support. This magazine has been part of village life for many, many years and we are hopeful it will continue to be so.

*June Chapman*





## **Yalding Post Office High Street, Yalding, ME18 6HS**

**Most loved  
Post Office in Kent  
2016/17/18/19/20**

### **We're staying open..**

I have received a letter from Post Office Ltd offering me the choice to either remain as "Conditionally Resigned" awaiting a new operator to take over the branch at new premises or to continue operating the branch on the existing contract for the foreseeable future.

This includes all terms, rights and fixed remuneration. It also means that on my retirement the new Postmaster would be offered the same contractual terms.

No more hoping and waiting for POL to allow us to remain open. Basically this means you are stuck with me for a while yet.

### **Sorting Office news.**

Well, the posties are now operating from the new Medway Valley Royal Mail office at Snodland.

Cheryl is keeping her current round but, sadly Dan and Jo are no longer working the rounds in Yalding.

Jo has gone back to her previous employment (before Covid) and Dan has transferred to a different office with a plan to move north in the relatively near future.

We had a collection for Dan which was presented to him in a small ceremony on Friday 12th March and we all wish him and his family the very best of fortune for the future.

### **Royal Mail postal problems.**

We are receiving increasing enquiries from customers whose mail appears to have gone astray over the past months.

Please be aware that Royal Mail staffing levels have taken a huge hit due to Covid 19.

Many main offices are operating at about 50% staff

capacity with current mail levels at about double the normal.

Even since Christmas, when mail levels normally decrease significantly, mail levels have stayed very high. Please don't panic...the mail will arrive eventually.

Please also remember that since Brexit all parcels to EU destinations now require a customs label. All customs labels have to be filled in with block capitals and be clear and legible and must include the senders' name and address.

If not the package will not leave the country and will be returned to the sender.

Another thing causing some confusion is customers attempting to track "Signed For" items and finding that the system tells them the item has not left the Post Office it was sent from.

This is because "Signed For" is only registered in the tracking system twice. Once on despatch and only again on arrival at destination.

Another concern has arisen recently...For pre-paid "**Tracked**" items we can only accept returns.

If you have pre-paid for and printed your own "Tracked" label most of these **cannot** be processed or deposited at a Post Office.

These have to be taken to main Royal Mail depots at Tonbridge or Parkwood.

Our apologies, but we are not allowed to accept them. As above, all "tracked" returns can be processed at Post Offices.

All "standard", "signed for" and "special delivery" pre-paid items can also be processed at Post Offices.



# YALDING POST OFFICE

For those customers with Post Office Card Accounts. (POCA) We await news from POL and Gov't about how they will cater for those who cannot transfer benefits to a standard bank account.

**The Coronavirus emergency.** Please wear a mask in the shop. Only one customer in the shop at any one time (more than one allowed if residing together) Please also keep a safe distance apart whilst waiting to enter.

**Helen's cakes and biscuits.** Helen has re-started her biscuit making and we hope to have a steady supply available again at the Post Office. Thank you Helen.

**Vulnerable persons cash withdrawals.** We are happy to allow 3rd parties to undertake financial transactions for vulnerable or isolating people. We require a confirmation letter from the customer and ID from the 3rd party.

New stamps sets this month are the Classic Science Fiction and the Wars of the Roses collections. Other Philately products in stock or can be ordered on request.

All kinds of Post Office savings, insurance and investments, telephone and Broadband services available. Post Office Classic Travel Insurance cannot be arranged in branch at present due to a technical problem, but you can collect literature and contact details from us.

Foreign Currencies. We still have a stock of Euros and US Dollars...Hopefully people can resume foreign travel this year. POL have informed us that credit on Travel Money Cards can be encashed at all branches in UK currency.

Your Post Office offers free cash withdrawals with most debit cards, pay bills, top up gas and electricity cards and keys, pay in cheques and cash to most banks using your debit card. We do Health Lottery, phone Top-Ups, Fishing licences and Moneygram. And, of course...we sell stamps and send parcels and letters all over the world.

Bakery items fresh every day, Croissants and other pastries Thursdays and Saturdays, cold drinks, unique greetings cards by local artists, Yalding honey, Joan's jams, Bit Spicy curry mixes, hand-made fabric items, stationery, Yalding mugs, fresh eggs from local chickens, Loddington Farm fruit juices, Oakapple Farm fresh produce.....All in stock now. As well as a large stock of locally made face masks, bags and scrunchies...all moneys to the Yalding Surgery fund to pay for some new vital equipment. Well done to Sharon...the face mask manufacturer extraordinaire...

The Post Office Gift Card is an ideal gift for that person hard to buy for....These can be used at pretty much every major retailer in the UK and online. See us for details. Telephone...01622 814327 Facebook page Yalding Post Office and website. [www.yaldingpostoffice.weebly.co.uk](http://www.yaldingpostoffice.weebly.co.uk)

## Our opening hours are:

09.00 - 5.30pm with a break for lunch between 1 and 2  
Half day Wednesday (1pm) and  
Saturday (closed 12.30)  
Closed on Sunday

### 100 CLUB

#### March Draw Results

1st	Mark Bollen	100
2nd	Andrew Bollen	70
3rd	Annie Lee-Davey	4

Next Draw is on Easter Day 4th April

**R. Young**





## **Join our Laddingford Family!**

**Do you know anyone looking for a Primary School place?** We still have a limited number of spaces in some year groups – please give us a call to enquire.

Thank you to everyone who attended our virtual open events in November, if you missed these but would still like to know more about the school please get in touch with us via the school office email address below. We would be happy to have a chat with you, via phone or video call and to share some videos with you to give you a flavour of our school.

Our school website has lots of information too, including a virtual tour video on the 'admissions' page;

[www.laddingford.kent.sch.uk](http://www.laddingford.kent.sch.uk)

### **Headteacher: Mrs Gemma Hitch**

Laddingford St Mary's Primary  
Darman Lane, Laddingford,  
ME18 6BL

01622 871270

[office@laddingford.kent.sch.uk](mailto:office@laddingford.kent.sch.uk)

Find Us on Social Media



@LaddingfordCEP

# **Laddingford Primary School News**

## **Back to school...again!**

What a joy it has been these past couple of weeks to see teachers teaching, hear children's excited chatter and watch them play on the playground – I am aware that I am making Laddingford sound like something out of an old fashioned story book, which is probably a bit of a stretch, but it really is wonderful to be back!

As we make our way through the term, the focus is on making sure that children are happy and settled back at school; allowing them time and space for friendships to redevelop, and learning behaviours to adapt to being back in a whole class environment. The children are already getting back into the swing of things – I think perhaps after the year they have had they will be our most resilient and adaptable cohort ever.

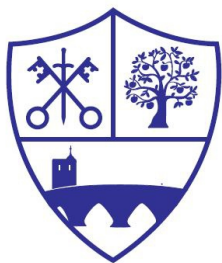


We are delighted to have received funding from the Yalding Educational Foundation for another cultural trip this year, and thank them for their continued support. We used the last donation to take the children to the Royal Ballet (pictures above of the Royal Opera House and a child with her story map, helping her follow the plot of the ballet). We all had the most wonderful day, visiting the Royal Opera house is something quite special, for adults and children alike.

We haven't yet decided how we will spend this year's support, it will of course depend how the Covid restrictions unfold in the coming months but we look forward to being able to think about going out on trips again and enriching children's educational experience.

By the time this is printed Easter will be just around the corner, I hope you have an enjoyable time and that the weather is kind and allows us to see family and friends outside when the rules permit.

Take Care, Mrs Hitch



Yalding St Peter and St Paul  
Church of England Primary School

## Yalding St Peter and St Paul CEP School

Yalding School is a friendly and successful school. We have a unique setting with engaging, bright and inspiring classrooms and extensive outdoor learning spaces.

Our vision is to provide a caring and engaging learning environment which nurtures the well-being and aspirations of all members of the school community.

Our mission is to develop learners who are curious, motivated, creative, co-operative, persevering and independent.

Our school website has lots of information, including a short film and virtual tour video on the Home page.

[www.yalding.kent.sch.uk](http://www.yalding.kent.sch.uk)

### Headteacher:

**Mrs Sarah Friend**

Yalding St Peter and St Paul  
CEP School,  
Vicarage Road, Yalding,  
ME18 6DP  
01622 814298

[office@yalding.kent.sch.uk](mailto:office@yalding.kent.sch.uk)



Find Us on Facebook

# Yalding School News

## Learning at home

In the last few weeks of lockdown, the children of Yalding continued with their remote learning.

## Smarties Day

On the last day before the half term break, the teachers put together a pack of work where all of the activities revolved around Smarties. The Maths was based on sorting and counting the different colours with some of the older children using these numbers to work out percentages, fractions and ratios.

Other ideas, which were enjoyed by whole families, included creating adverts; writing poems: making words from the letters in the word SMARTIES; rainbow coloured art; making and evaluating packaging; and baking. Many wonderful cakes, biscuits and flapjacks were enjoyed in homes across the village that day.

## World Book Day

On March 4th, children learning at home and those in school were encouraged to spend the day enjoying book related activities. Many chose to dress up and/or read in interesting places. Some of the costumes were amazing and children were to be found reading up in the branches of trees, in indoor dens, on slides and even balanced on the waste paper bin. As a school, we enjoyed sharing the children's photographs in our Celebration Assembly Zoom on Friday 5th March.



## Back where we belong.

As Spring started to arrive and the daffodils came into bloom, it was wonderful to welcome all pupils back to school. There were many smiling faces (children and their parents) as everyone arrived. It was lovely to hear, once again, the hubbub of conversation in our classroom and the sound of children playing in the playgrounds.

Mrs Friend



## YALDING PRESCHOOL

JOIN IN WITH THE YALDING PRESCHOOL

# Easter egg trail

Good Friday 2nd April 11am-3pm

CAN YOU HELP THE EASTER BUNNY FIND ALL THE EASTER EGGS THAT HAVE BEEN HIDDEN AROUND THE VILLAGE?

EACH ENTRY GETS A MAP TO HELP WITH YOUR SEARCH. PLUS A CARROT SWEET CONE! FINISHED ENTRIES GET ENTERED INTO A DRAW FOR A LARGE EASTER EGG AND TWO SMALLER PRIZES.

HOT DRINKS AND HOT CROSS BUNS AVAILABLE FROM OUTSIDE THE PRESCHOOL

£2.50 ENTRY

Pay via our sumup link... [twyford-preschool.sumup.link](https://twyford-preschool.sumup.link)



## TESTON & WATERINGBURY PRESCHOOL



We continue our term 4 teaching the children all about recycling and how we dispose of different materials such as paper, plastic, metal, and glass. We learned which ones can be recycled and which ones go to landfill.

The children also took home their cress that they had planted in our upcycled plastic bottles!

As you can see by our photo, we had a lot of recycling to do to fill up our bins.

We will finish this term making chocolate birds' nests and enjoying an Easter egg hunt in the garden with the children.

All the staff and children would like to wish everyone an enjoyable and happy Easter holiday

If you are interested in joining our pre-school, please contact Tina Driver on 07805 796353 or email [tandwnngroup@gmail.com](mailto:tandwnngroup@gmail.com)





## **EXTRACTS FROM RECENT PARISH COUNCIL MEETINGS**

### **TO ACCEPT THE RESIGNATION OF COUNCILLOR ROBBINS**

Cllr Patricia Robbins had tendered her resignation to the Chairman, which was accepted. The Chairman thanked PR for all her hard work, in particular with regard to the Neighbourhood Plan. PR attended the meeting as a member of the public in order to say farewell to her former colleagues.

### **THE REINSTATEMENT OF THE VERGE OPPOSITE BIRKBY'S**

A second quote has been received, which was higher than the first. It was agreed to appoint Nepicar to carry out the work as soon as possible.

### **NEW PARISH NOTICEBOARDS**

Money has been added to the budget to progress this project.

### **COUNTRYSIDE ACCESS TO THE KINTONS**

Countryside have accepted the quote and the funds have been received. Medway Valley Countryside Partnership (MVCP) have been given instructions to undertake that work. The legal document has been received. The Clerk has spoken to Countryside about the transfer of the track and the wooded area to Yalding Parish Council.

### **EROSION OF THE GRASS VERGE ALONG VICARAGE ROAD**

Money has been added to the budget to progress this project.

### **MBC LOCAL PLAN REVIEW - UPDATE ON PREFERRED PROPOSAL FOR HOUSING SITES**

The results of the regulation 18b consultation have been published and there is currently a policy to include the land north of Kenward Road.

### **POLICE MATTERS AND NEIGHBOURHOOD WATCH (NhW)**

No further update on NhW. Our PCSO is happy to join a meeting but the police system can only use Teams. It is understood that Maidstone Police are looking at a computer that is not linked to the police system and this may allow PCSO Nicola Morris to join a meeting.

### **THE KINTONS**

The kissing gate on the public footpath that leads to Cheveney land needs does not need replacing but the posts and fencing do. KG/Clk are investigating repairs.

### **PLAY-AREAS**

#### **JUBILEE FIELD**

The moles have been removed. A member of the public has reported that the toddler slide cannot be used during hot weather as it gets dangerously hot. DS has spoken to the supplier but there is no resolution so we need to check if we can change its position.

#### **THE KINTONS**

The Helter-Skelter has been repaired by The Paint Repair Centre at Orchard View Garage at no cost to the Parish. Many thanks. As we have been unable to meet with the children to look at new equipment, DS has taken photos into school for them to look at.

### **YALDING'S RESPONSE TO COVID-19**

Sadly, we have had three deaths in the parish. Most people seem to be coping with shopping etc. Yalding Taxis have set-up Cabs for Jabs, a great help with getting people to the vaccination centres. We will need to keep up to date with government guidelines as we exit lockdown. It is essential that we adhere to these guidelines in order for us to, hopefully, return to a normal way of life.

## **CONTINUATION OF REMOTE MEETINGS**

The law was amended to allow virtual meetings until 6th May 2021. The National Association of Local Councils (NALC) are pushing for an extension otherwise if parishes hold actual meetings after that date they could be holding an unlawful gathering. If we are still having virtual meetings, we must hold an Annual Parish and an Annual Parish Council meeting virtually this year.

## **FLOODING**

The Chairman has had dialogue with the Environment Agency (EA) regarding the number of flood alerts that are being issued; a meeting is to be set up with the EA, The Chairman and The Chairman of Collier Street to look at this.

Several new flood wardens have come forward following the adverts in the Parish Magazine.

The Chairman had noted that some residents had not removed their PFR which could damage the seals. She will send a note to remind them to at least loosen the fixings.

Lyngs Farmhouse Substation - The Chairman and the EA are chasing UK Power Networks (UKPN) to move the substation to Lyngs Close as originally agreed. UKPN are in dialogue with the owner of the former Curley site who is in agreement to including the sub-station in a proposal for development of the site. The EA have written to UKPN stating that they would not necessarily be in a position to support any development on that site and this would also be the case with YPC's flood policy.

Burgess Bank Substation - The Chairman has been in dialogue with UKPN regarding tidying up the site and UKPN have said that this will be undertaken and have asked if there is any community use for the old site. KG is keen to landscape the site. All agreed.

## **NEIGHBOURHOOD PLAN (NhP)**

Membership of the Steering Group has been reviewed and a sub-group set up responsible for the detail of writing the Policies. The Sub-group includes DL, JB, Paul Mahoney, and Derek Hudson.

## **YALDING AND LADDINGFORD SPORTS ASSOCIATION (YALSA)**

The first meeting of the Executive Committee has been held. The main topic of conversation was restarting at the Kintons when lockdown restrictions permit. This is due to be the first weekend in April, but awaiting guidance from the governing bodies. Unfortunately, this is when the Cricket starts as well so planning is in place to avoid clashes on the first Saturday. One thing that may alleviate this slightly are the new goals at the Jubilee field. A grant has been received from the Football Foundation and hopefully these will be installed before that weekend. The Clerk has asked KCC to cut the grass at The Kintons prior to the start date. SG has sorted out the Bank and Utilities for the pavilion and NatWest has given £100 compensation for misadministration. The individual clubs have agreed to set up direct debits to YALSA from April for the utilities.

## **LEES PICNIC AREA**

### **REVIEW 2020 INCOME AND EXPENDITURE**

Despite not opening until August the car park still made a profit of £16,681 as well as a new barrier installation. A small business Covid-19 Grant of £10,000 was claimed.

### **REVIEW 2021 OPENING AND ANY EXCEPTIONAL COSTS**

If weather continues to be fairly dry, the car park will open on 1st April for the Easter weekend. If not, it will be hard stand only for permit holders. The cesspit will need to be emptied and the toilets cleaned before it opens. The area is being prepared for electricity connection, a trench is to be dug. Flowbird have rectified the SIM card issue as it was just using Vodafone and not roaming as promised.

## **PERMIT CHARGES**

The following was agreed:

- Friday to Sunday to include Bank Holiday Mondays, the cost through the barrier would be £20 for a weekend and £28.50 on a bank holiday weekend – seasonal permit charge £120.
- Park anytime, any day and overnight – proposed seasonal permit charge £250.

## **FINANCE**

### **BUDGET 2021/22**

Due to the massive underspend during 2020/21, and projects carrying over due to Covid-19 restrictions and the difficulty getting timely quotes, it is anticipated that a carry forward figure at 1 April 2021 is likely to be in the region of £130,000. The Chairman has earmarked unspent funds.

A draft budget was reviewed in detail line by line and was unanimously accepted.

### **PRECEPT 2021/22**

There will be no increase in the Parish Precept for 2021/22, which will remain at £69,562. There has been a slight increase in the Parish Services payment from MBC of £11,426.

### **THE BENCH IN THE CHURCHYARD**

It was agreed to appoint MVCP to replace it at a cost not exceeding £300.

### **THE GLEBE - LIGHTING PROPOSAL AT THE JUNCTION WITH VICARAGE ROAD**

The Chairman has written to Countryside's consultant to confirm to them that YPC do not wish any additional lighting at the junction but that they might like to contribute £3,500 to upgrade the Kintons' lantern, which has needed to be removed due to damage.

### **CODE OF CONDUCT**

The Model Code of Conduct has been out to consultation but outcomes do not seem to have been received. The choices are different this time; either accept the LGA or the Maidstone Borough Council (MBC) version. There are a couple of worrying points coming out in respect of parishes, one being that the clerk must be qualified. Only about 20% of all clerks hold a qualification and it would be impossible to vastly increase this. The Chairman will discuss this with MBC.

### **CORRESPONDENCE FROM MEMBERS OF THE PUBLIC**

- Email regarding debris in river, The EA have tried to remove but it is stuck firm. They will try again
- Email regarding the state of the Burgess Bank substation area and also asking what Southern Water are doing with the tankers.
- Email regarding HGVs throwing rubbish into residents' gardens.
- Email from Dr Anthony Fincham advising the death of his mother, Dr Elizabeth Fincham aged 98
- Email thanking YPC for the Christmas lights staying up

### **MAIDSTONE BOROUGH WARD BOUNDARY REVIEW**

Work to undertake the review will begin in May 2021; this may affect both Ward and Parish Boundaries.

### **NEXT MEETINGS OF YALDING PARISH COUNCIL**

The next meetings will be held on Tuesday 6 April and Tuesday 4 May 2021 at 6.30pm. All meetings will be held via Zoom Video Conferencing until further notice. Parish Electors are able to address the Council by sending a written statement to the Clerk at [clerk@yaldingparishcouncil.gov.uk](mailto:clerk@yaldingparishcouncil.gov.uk) at least forty-eight hours in advance of the meeting. You may still attend the meeting but not speak and you will need to be able to sign into the Zoom meeting via the internet. The Clerk will advise you of the procedure.

**REMEMBER LOCAL ELECTIONS WILL BE TAKING PLACE THIS YEAR ON**

**THURSDAY 6TH MAY**

Police and Crime Commissioner

Kent County Council

Maidstone Borough Council

Yalding Parish Council By-election

## GATHERING REEDS IN YALDING by Jennifer Raikes

The flowering rush *Scirpus Lacustris* grows in slow-flowing rivers and has been used for hundreds of years to make baskets, floor coverings, mats and chair seats.

Many of you will know van Gogh's painting of the Yellow Chair or the more elegant Sussex chairs loved by William Morris in the early 1900s.

The Medway is rather too fast-flowing, but in the 1970s there were lots of rushes in the Beult up towards the Kintons, they are probably still there.

We used to cut them when they were full grown in July, when they were seven or eight feet tall.

It was quite a messy expedition in rowing boats with sickles, you must cut them as far as possible below the water line.

We tied them in 'bolts' and threw them on the bank to collect later in a trailer.

Then they were put to dry in a cool airy place, we slung them on nets in a garage or barn.

Once dried, you can take them out and wet them again, wrapping them up in an old towel to keep them damp, and they are ready to work with, they are soft and silky in your hands, and a lovely shade of pale grey green.

Yalding Women's Institute organised some classes.

Rose Hooker who lived at The Orchard in Vicarage Road and Nona Banks from Willow Grove were the experts and Germaine Brotherton came to teach us.

We started with table mats, progressed to waste paper baskets (I have mine still) and then some of the keenest moved on to seating old chair frames.

A rush seat is a very satisfying thing to work at on a coolish spring or autumn day (you need to keep the rushes damp.

You twist them in a continuous rope, adding another couple of stems as you go along with a half loop on the underside. Soon your seat begins to take shape, twisted on the top and left plain underneath.

The brittle tips with the flowers are pushed into the pockets for stuffing as the seat builds up. The hole in the centre gets smaller and smaller until finally you can finish off with a half hitch.

A few of us continued the old craft for several years, once I demonstrated in the Craft Tent at the Kent Show.

I was interviewed by a reporter from Radio Kent who began by remarking 'That's a wreck of an old chair, what are you going to do with it?'

I was indignant – 'It's not an old wreck, and by the time I've finished with it, it will be good for the next hundred years!'

***Jennifer Raikes***

Jennifer  
pictured here with  
her son Jason  
in 1974





# YALDING GARDEN SOCIETY ANNUAL GENERAL MEETING and Talk on TOPIARY by DARREN LERIGO

Yalding Garden Society's 65th AGM, which also forms the start of the YGS year, took place on 1 March 2021.

Covid restrictions this year ruled out the usual social and convivial gathering in the Village Hall, which brings together far more members than might be expected for the rather dry and formal purpose of conducting an AGM.

Despite this, around 40 members of the Society attended this meeting from their own homes, through the complex wizardry of Zoom. As customary, the AGM was chaired by the Society's president, Sue Williams.

She began the meeting promptly at 8pm, welcoming all those participating, and thanking the Committee who had done everything they could to keep the Society functioning, despite the inevitable disruptions caused by the pandemic.

At the president's request, the Society's current chairman Joy Virden gave a summary of the minutes of the previous AGM, held in the Village Hall on 2 March 2020; followed by the chairman's report on the year just concluded.

Inevitably many of the planned events and activities had had to be cancelled, but did include some meetings held on Zoom, such as Jean Schofield's demonstration of flower-arranging, and the recent talk by Caroline Halfpenny on the splendid gardens and palace of the Alhambra in Granada, Spain.

The chairman noted with deep regret the deaths in the course of the year of some loyal members, including particularly John Doctor, Val Wheeler, and Colin Vaughan.

The chairman concluded on an optimistic note, looking forward to the Society's Autumn Show, due to be held on 18 September 2021, and the possibility of an outing in the second half of 2021.

The president next asked the treasurer, Callum Findlay, to present the accounts, which this year had been compiled in abbreviated format, because of the much reduced activities in the course of the year.

Members of the Society had already been advised that the Committee had decided not to collect the usual annual subscriptions for 2021-22 from existing members, but to carry over the subscriptions already paid for the previous year.

The meeting then approved the re-election of those office-holders who were willing to stand for a further term, as well as the honorary auditor, Ivor Hughes. Jo Doctor, who had been serving on the Committee since 2015, had now sadly decided to resign.

She was warmly thanked for her valued and creative contributions to the Society's activities.

Bibi Findlay was then elected to the Committee in her place, and welcomed to the new role.

The president next announced that the annual Borton Award, for outstanding service to the Society.

This was presented to Lois Mitchell in recognition of her work in producing the periodic newsletters, which had been particularly valued in the current difficult year.

The Banksian medal, normally presented to the most successful exhibitor at the Society's shows, could not be awarded this year, because the shows had all been cancelled.

The president again thanked all the committee for their work over the year, including for the AGM.

He mentioned in particular Alastair West for managing the Society's e-mail communications and internet operations. She then closed the AGM at 8.24pm.

The AGM was followed, still on Zoom, by an interesting and entertaining illustrated talk by Darren Lerigo, on the very pertinent topics of topiary and pruning.

He held everyone's attention by his own expertise, and by his light and amusing delivery, including a few not too serious quiz questions.

Now it will be for the rest of us to enhance our own gardens, by putting his advice into effect.

## ***The Adventures of a Seed Detective -***

***Adam Alexander***

***will be on zoom at 8pm***

***on the 7th April 2021***

***- if you would like to join***

***Yalding Garden Society***

***- contact Joy Virden***

***on 01622 814509***





## YALDING YULETIDE MARKET IS BACK IN 2021\* AND WE NEED YOU!

We plan to return on Saturday December 4<sup>th</sup> in the High Street. We would love to hear from you, if:

- You would like to have a **stall\*\*** at the market. We give priority to local produce, gifts and crafts. We are also interested in all things Christmas related that our customers would like to buy! Food and drink are great too!
- You have ideas for the **entertainment\*\*** on the night. We have several regular acts but are always open to ideas!
- We need a village organisation or a team / couple to manage the much loved **“bottle stall”**. This is a cornerstone of the market and involves a lot of fun in the setting up during the year. Profits go to the Yuletide funds and are crucial in ensuring that the market can operate each year. It’s a great opportunity to get to know people especially if you are new to Yalding.
- You want to **play a role** in the market – perhaps help with one of the many activities that our small but beautifully formed team of volunteers handle? Perhaps help out by climbing ladders and putting up cables on the day itself if you’ve always wanted to wear a hi vis?!

Please reach Jason Bryant on [jason.bryant1968@btinternet.com](mailto:jason.bryant1968@btinternet.com) for any of the above. If you are new to Yalding then we would love to hear from you. Thank you for reading and Merry Christmas 😊.

\*subject to council, health and COVID related regulations and necessary licenses and approvals.

\*\*we reserve the right to accept, reject or suggest alternatives to any proposals.



We have some beautiful trees throughout the village, but the most famous is Blunden's Beech. There is a poem dedicated to Edmund Blunden, written by Sigfried Sassoon referencing the tree.

A plaque with the poem is on the wall by the tree for all to read. And indeed it says that of all the trees, this beech is the best of them all and that was written after the First World War, so it was a beautiful specimen even then.

Under its branches in the Spring many crocuses bloom in lovely purple - food for many bees just out of hibernation and in need of sustenance. It shows its full glory in the Summer with a copper tone shining in the light.

This tree is in good company and it is protected by the Conservation Area status it shares with the village which starts at the bottom of the village and extends up the High Street to include The Green which is where it is located.

Other trees on The Green include the Holm Oak which is a particular favourite of children as they meet in its branches and play.

Two giant Chestnut trees stand sentinel behind the War Memorial and there is a London Plane tree planted by the Women's Institute many years ago which houses the lights which add to the magic of Christmas time in the village.

This tree stands next to the War Memorial.

## **YALDING FOOD BANK & COMMUNITY SUPPORT**

### **Food Bank Donations**

**Monday - Friday:** 11am-12pm

(see website or Facebook for up to date times)

Food bank deliveries are available all week.

**Contact:** support@yaldingchurches.co.uk or  
help@yaldinghelp.co.uk or  
call Father Paul on 01622 814182

For further information on what is needed in the foodbank, please look at the Church Facebook page which is updated regularly. [www.facebook.com/yaldingchurches](http://www.facebook.com/yaldingchurches) or go to the church website at [www.yaldingchurches.co.uk](http://www.yaldingchurches.co.uk) or call Rachel Curley on 07814 750500.

We would also like to thank everyone who has donated to the foodbank and its support fund. Our thanks also to everyone who delivers the bags.



## Good news (we hope)

On the day of writing this, we at last laid the playing surface for the new permanent practice net (see picture below). By the time you read this, the rest of the project should be complete, with the nets hung and the run-up covered.

I recently rang Chris Quirk, who used to be club captain, and mentioned the new net. He told me that they had been planning to do this thirty plus years ago – so it just goes to show what an amazing effort Roy and his team (Keith, Paul and Kevin, ably assisted by David Law) have made. We are also grateful to Malcolm Marden for helping with his trailer, and to Graham Shead, who supplied the matting for the run-up. And of course, our thanks to all those people who helped us raise money towards the build in a year when we had zero income. A special thanks to Ian and Angela Burgon from I&A Communications for their generous, and unexpected, donation.

We are all looking forward to getting back to the Kintons to practice and play, but at the time of writing, there has been no announcement from the ECB about when that might happen. Government guidelines suggest that we can resume some form of cricket training after the school Easter holiday. If conditions don't change, then please feel free to turn up at the Kintons on Saturday mornings from the 19<sup>th</sup> April – all ages and skill sets welcome. The first couple of weeks are likely to be a little chaotic, as we sort out what we can do, but (weather permitting) we will be there every Saturday from 10.30am onwards. It will just be a great relief to get some sport underway.



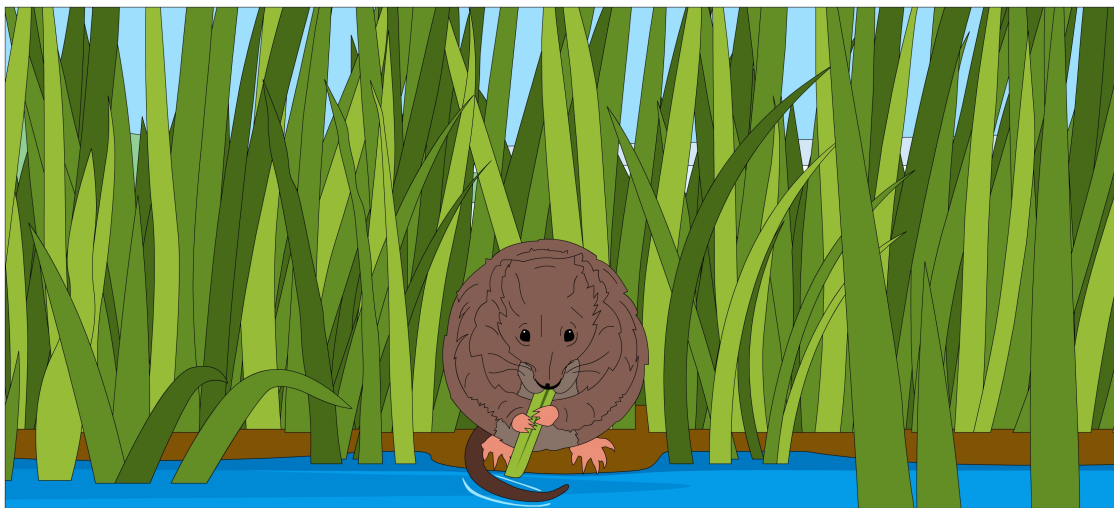
If the current government timetable pans out, then we should resume matches in May. This will include the first XI league team, age group cricket (under 15s and under 11s), and a planned 'development team' of 21s and under for some friendly fixtures. The venerable Yalding Old Boys also have some planned fixtures, so please get in touch if you think you would like to participate in any of these categories.

It feels like we are on the cusp of a really exciting summer. If you would like to get involved in the club in any way, or just have a question, please contact Martin on [martin.tripp.cricket@gmail.com](mailto:martin.tripp.cricket@gmail.com). If

you think you might be able to help out towards the ground upkeep, please contact Roy on [RoyFarrier@litmuspartnership.co.uk](mailto:RoyFarrier@litmuspartnership.co.uk).







## RATTY'S TALES

**April...**and Spring has sprung!

I'm looking forward to the warmer weather, more light, fresh vegetation to eat and hide in...

We water voles lose over 90% of our midsummer population in winter so we have to eat ravenously and procreate like mad to keep our species alive.

Look out for neatly cut plants and little piles of green poo...that'll be us.

Still worried about this application to build an egg / chicken farm next to the river a couple of miles upstream of us.

Apparently lots of concerns about animal welfare and pollution running off the fields when they flood which can affect me and my aquatic mates very badly.

I am pinning my hopes on the Environment Agency keeping my river water clean!!!

The River Bailiff is still patrolling the riverbank and looking out for litter and pollution.

Please help him by taking your rubbish home and report any incidents to him or the Environment Agency

Nighty-night.      **Love Ratty.**

## YALDING & LADDINGFORD FOOTBALL CLUB

Following a thoroughly disrupted year, Yalding & Laddingford Football Club finally started playing again from the end of March.

The curtailed season however, was successful for a number of sides with the U12 Falcons and the U11 Eagles winning their leagues and the U11 Kestrels and the U9 Predators finishing runners up.

Training for all teams resumed from 31st March 2021 and matches start two weeks later for a short week season. We will have 9 sides from U7 up to adults playing throughout this period.

Throughout the Summer we will continue with light training with many Summer tournaments through June and July.

WE ALWAYS find space for newbies and welcome all abilities.

**Further details from [stevefaulkner29@aol.com](mailto:stevefaulkner29@aol.com)**

## DEADLINE FOR COPY & ADVERTISING

**10th of every month**

Editor: June Chapman

[mag@yaldingchurches.co.uk](mailto:mag@yaldingchurches.co.uk)

Advertising: Lara Franklin

[ylpm.advertising@gmail.com](mailto:ylpm.advertising@gmail.com)

Weekdays 8am - 4pm Saturday 8am - 2pm Sunday 8am - 11:30am



Barista Coffees  
Homemade Cakes  
Sandwiches and Toasties

Speciality Teas  
Organic Soups  
Pastries

PRE-ORDERS WELCOME 07794 233 513 call or TEXT  
[yaldingtearooms@gmail.com](mailto:yaldingtearooms@gmail.com)

*Under new ownership. Drop in and have a taste!*

## YALDING TAXIS

**Competitive - Personal - Professional - Reliable**

- Friendly, local, family-run business with many years' experience excellent working knowledge locally, Kent, London, southeast
- No journey too short or too far
- Whole of Kent covered for long distance runs (Airports, Seaports, London etc.)
- 24-hour service, 365 days a year (advance bookings)
- Very competitive rates and no extra charge after midnight
- Lady drivers available
- All major credit and debit cards accepted
- Vehicles with up to 16 passenger seats
- Modern, clean, comfortable fleet - fully licensed and insured
- All drivers police checked and licensed
- Business and personal accounts welcome

**01622 81 43 43**  
[mike@yaldingtaxis.co.uk](mailto:mike@yaldingtaxis.co.uk)

## FINE FINISH

**CARPENTRY & JOINERY**

**All aspects of carpentry undertaken including:**

- Kitchens
- Wardrobes
- Flooring
- Panelling
- Hand Cut Roofing

**A fully qualified and professional service with over 25 years experience**

**Yalding Based**

[www.finefinishcarpentry.co.uk](http://www.finefinishcarpentry.co.uk)

Contact: John Aldrich

**01622 816747 / 07973 439957**

## WHITES LANDSCAPING

**SPECIALISTS IN DRIVES, PATIOS, FENCING and GARDEN DESIGN**

**Your local hard landscaping company.**

**Extensive portfolio and references, free no obligation quotes and advice**

Garden and Drive design and construction including drives, patios, fencing, brick-work, turf, artificial grass and all associated outdoor work.

**Maidstone 01622 962646**

**Staplehurst 01580 891079**

**Mobile 07986 843903**

**Checkatrade.com**

**REGISTERED & FULLY INSURED**

[www.whiteslandscaping.co.uk](http://www.whiteslandscaping.co.uk)

# west kent

## FENCING & LANDSCAPING CONTRACTORS

**01892 838752**

**ANDY**  
**07841 643184**

**SEAN**  
**07973 403624**



**ascruickshank@btinternet.com**  
**www.westkentfencingcontractors.co.uk**



## HUDSON

### CARPENTRY & BUILDING SERVICES

All aspects of Carpentry, Building & Home Improvements

Designed, supplied and fitted, we offer a full range of Home improvements.  
Extensions & Conversions  
Kitchens & Bathrooms  
Tiling, Flooring, Doors & more!

#### FULL PROJECT MANAGEMENT SERVICE

Including Plumbing, Electrical, Plastering & Decorating

**Fully Insured | Over 25 Years Experience | Local & Reliable**

See our Facebook Page: [www.facebook.com/hudsoncbs](http://www.facebook.com/hudsoncbs)

01622 816818 | 07838 156170 | [hudsoncbs@hotmail.co.uk](mailto:hudsoncbs@hotmail.co.uk)

**"Simply the Best"** **The Old Forge**

**The Old Forge Cattery**

*Luxury boarding cattery  
in Luddingford*

Contact Sandy King  
on 01622 871330



**Cattery**

Email: [Cats@theoldforgecattery.co.uk](mailto:Cats@theoldforgecattery.co.uk)

Website: [www.theoldforgecattery.co.uk](http://www.theoldforgecattery.co.uk)

## G.H DECORATORS AND PROPERTY MAINTENANCE

professional Painters & Decorators  
Covering the South East & Kent

Tel: 01622 813947 / 07539 216392

Email: [ghdecorators@hotmail.com](mailto:ghdecorators@hotmail.com)



## Computer Problems

???



**Any computer related issues can be fixed.**

**Contact Dean on:**  
**07722 293187**

**[warfordcomputers@hotmail.com](mailto:warfordcomputers@hotmail.com)**

**£25 per hour**

**NO FIX, NO FEE, NO CALL OUT CHARGE**

# TAD STUDIOS Ltd

*Your complete  
Architectural  
Services under one  
roof*



**Tailored Architectural Design Studios Ltd**

Complete friendly Architectural design service  
to suite everyone's needs

- Planning applications • Property extensions • New Houses
- Garage conversions • Loft conversions • Annexe designs
- Small developments • Building Regulation Drawings

Allan Robinson

01622 872081 / 07900 564987

[ajr@tadstudios.uk.com](mailto:ajr@tadstudios.uk.com) / [www.tadstudios.uk.com](http://www.tadstudios.uk.com)





## DessoMech Bike Repairs

A common sense and affordable approach to bike servicing and repairs

Doorstep collection and delivery

**07598 225195**

dessomech@icloud.com

www.DessoMech.com

## ELM FENCING LTD

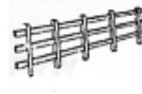
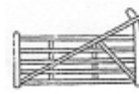
All types of fencing and gates supplied and erected.

Specialists in domestic, agricultural + Equine.

Please call

**01892 838258**

**01622 871468**



**WWW.ELMFENCING.COM**

## THE 1:1 DIET

by Cambridge Weight Plan

**www.sophie1to1diet.co.uk**

#oneZonediet

**Lose Weight & Feel Great!**

facebook.com/  
sophie1to1



Arrange your 1:1 consultation

with Sophie on

**07795 511950 or**

**sophie@sophie1to1diet.co.uk**




**Violin lessons with Rosemary Hinton**  
Dip ABRSM, BMus Hons, LRAM  
One to one lessons  
for all ages and abilities!  
Mobile: 07850 230 873  
or Email: [RoseHintonViolin@gmail.com](mailto:RoseHintonViolin@gmail.com)

## PIANO LESSONS

For Children & Adults - Beginners to Grade 8

**MARJORIE AYLING BA Hons., FTCL, ARCM.**

T: 01892 835702 E: [MarjorieAyling@outlook.com](mailto:MarjorieAyling@outlook.com)



**Do you live in an area with a history of flooding?**

FloodRe insurance was launched on 4th April and is designed to assist homeowners in obtaining affordable property insurance for homes situated in high risk flood areas.

In addition to offering competitive premiums, qualifying properties benefit from a standard flood excess of **£250**.

If you would like advice or quotations for your property, get in touch with us on **01622 815 011** or email us on [info@lion-insurance.com](mailto:info@lion-insurance.com)

To view further insurance covers we arrange, take a look at our website

**www.lion-insurance.com**

Tel : 01622 815 011

**Lion Insurance Consultants**  
(Tonbridge) Ltd.

**Shingle Barn Farm, Smiths Hill,**  
**West Farleigh, Maidstone, ME15 0PH**

Authorised and regulated by the Financial Conduct Authority.



Dude and Arnette are a fourth generation family business. Our team specialises in oast cowl repair, construction and maintenance. Wherever you live in the UK, if you have a building with an Oast cowl (the distinctive chimneys on the top of Oast houses) then it's almost certain it will have been serviced by one of our family at some point in its life.

From royalty to business and regular homeowners, we have been the go-to oast house repair company for over seven decades.

Get in touch to find out how we can help you.

**Call us for a quote or advice on:**  
**01622 725 898 / 07973 332 790**  
**[info@dudeandarnette.co.uk](mailto:info@dudeandarnette.co.uk)**

**www.dudeandarnette.co.uk**



**DUDE & ARNETTE**  
**OAST COWL CONSTRUCTION**



# ORCHARD VIEW GARAGE

Hampstead Lane, Yalding,  
Maidstone, Kent ME18 6HG

**01622 814204**

**ALL AVAILABLE AT ORCHARD VIEW GARAGE**

Oil/Filter Service	Cam Belt Replacement	2 Wheel Alignment
Intermediate Service	Clutch Replacement	Bulbs & Wipers
Full Service	Tyres & Puncture Repairs	Fault Finding
Major Service	Engine Management Lights	Brake Fluid Changes



**LOOK AT ALL THE CARS WE SERVICE...**

Mercedes · BMW · VW · Audi · Fiat · Mini · Skoda  
Ford · Land Rover · Mitsubishi · Citroen · Peugeot  
Renault · Nissan · Toyota · Honda · Alfa Romeo  
Vauxhall · Porsche · Jeep · Chevrolet · Volvo

**...and all other makes**

**SERVICE BOOK ALWAYS STAMPED WHEN PRESENTED AND SERVICE LIGHTS EXTINGUISHED**



Got a problem with your car? Blown bulb? Broken door handle or I've got a funny noise coming from somewhere! then give us a try, we will be only too pleased to help.

Years of experience come together at Orchard View Garage, you too can join our family of extremely satisfied long-term customers.

Mark Newman, Director

**01622 814204**

Prices valid from 1st March 2015



**FREE LIGHTS CHECK Stay safe all year round**

# Taylor's Tails - Dog Groomer



**City & Guilds Qualified - Fully Insured**

**taylorstails@outlook.com**

**07900 561336**

**YALDING**

# Primary Plumbing

All aspects of heating and plumbing works kitchens & bathrooms

Established over 30 years. Qualified installers

**"Anything in the pipeline"**

**01622 820393 07930 758250**

# Phillips & Painter Ltd

All aspects of Brickwork & General Building

Small works to New Builds

**Established in 1983**

**GARY or JOHN**

**Call 07876 243198 or 07799 691449**

**01622 812925**

**phillipsandpainterltd@googlemail.com**



Steeped in history,  
our pub was built in 1492

Originally a Yeoman's house  
it became a pub in the 19th century.

Now a traditional pub, log fires & oak beams

Cask ales, delicious wines  
and over 40 gins.

**Friendly & efficient service.**

**Open for wholesome lunches & suppers**

**Traditional and modern fayre.**

**01622 814266**

**WalnutTreePubYalding.co.uk**



**All aspects of interior refurbishment  
Since 1995**

Carpentry

Wood Flooring

Kitchen fitting

Decking

Partitioning

Patio awnings

Dry-lining

Fixed structures

Decorating

Fully insured

**Based in Yalding**

For free estimates contact Sam

Tel: 01622 816 705

Mob: 07984 628 903

Email: samjr75@btinternet.com



**Paul Wakeling**  
**Director**

17 Blunden Lane, Yalding  
Kent. ME18 6JQ

Telephone: 01622 817895  
Mobile: 07702 167555  
[www.pdwplumbing.co.uk](http://www.pdwplumbing.co.uk)

## PDW Plumbing & Heating

- All types of plumbing & gas central heating carried out
- Power Flushing
- 24 hour Call Out
- Free Quotations



## Farleigh Cakes and Bakes

Bespoke cakes especially for you



**Celebration cakes and bakes created for any occasion, designed in consultation with you.**

All dietary requirements catered for.  
Please telephone Julie on 077393 12127 or email  
[farleighcakesandbakes@outlook.com](mailto:farleighcakesandbakes@outlook.com).  
see us on **Facebook** and **Instagram**

## D.K. Plastering

**Plastering Contractor**  
**All Plastering Carried Out**  
**at reasonable prices**

**Call David on Tel: 01622 728494**  
**Mobile: 07974 891 795**



## Mel Boxall

**Painter & Decorator since 1995**

Professional service with  
exceptional results

References available upon request

- Interiors
- Exteriors
- Wall Papering
- Fully Insured

**For free estimates call:**

**07710 077 683**

**or email: [melboxall@gmail.com](mailto:melboxall@gmail.com)**

## + BRADFORD BATTERIES -

**Batteries for Cars**  
**Batteries for Commercial**  
**Batteries for Agriculture**  
**Batteries for Motorcycles**  
**Batteries for Leisure**

**CML TRADING**

Unit 1 Church Farm, Collier Street  
Marden, Kent. TN12 9RT  
Telephone No: 01892 730922  
Email: [msgodden@hotmail.com](mailto:msgodden@hotmail.com)

**Agents for**

Varta Batteries

Pavillion Batteries

Southern Farmers Group

**Free Battery & Alternator Testing**

## TOP2BOTTOM LTD



**ROOFING SPECIALISTS & BUILDING CONTRACTORS**

Friendly roofing and building company  
based locally in Benover  
**SPECIALISTS IN PERIOD &  
LISTED PROPERTIES**

Established over 24 years and fully insured

Roofing - Tiled, pitched, flat, leadwork,  
chimneys, PVC fascia/soffit /guttering

Building - Extensions, alterations, new build,  
renovation works, conservatories, windows & doors

Paving and Decking - Patios, drives, landscaping,  
drainage and groundworks

Maintenance and Improvements, General Repairs

Domestic and Commercial

Free estimates and advice

**Call Mark on 01892 730299 / 07850 911322**

**[info@top2bottom.co.uk](mailto:info@top2bottom.co.uk)**

**[www.top2bottom.co.uk](http://www.top2bottom.co.uk)**

Burnt Oak, Benover Road, Benover, ME18 6AS



## Interiors Ltd

Painting & Decorating

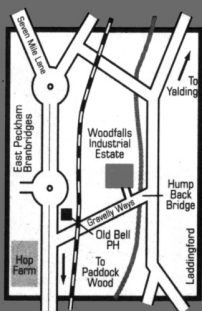
Specialising in all aspects of painting and decorating work, including full refurb.

bcdinteriorsltd@gmail.com

Phone : 07984 976627

## LADDINGFORD

Garage Service Ltd



- Collection & Delivery**  
(Railway Station or Home drop off/pick up FREE)
- Homestart & recovery**
- MOT's (No Re-Test Charge)**  
Servicing from £37.50 + Parts
- Guaranteed Work carried out**  
by fully qualified mechanics
- Full liability insurance**
- Welding and crash repairs**
- Full fleet maintenance**  
available
- Electrical repairs and Full**  
diagnostic testing
- Air Con Service**

**For a prompt, polite, friendly service**

Please come and see me or telephone

Ken Leary

01622 873020 (24 hr) or 07977 906577

## OFSTED Approved Childminder

**20 years experience**

has vacancies for children from 3 months upwards  
in a comfortable family setting in Yalding

Call Angela on 01622 814488  
or email Wyatt-g@sky.com



CITY & GUILDS &  
ADVANCED CRAFT

## Nigel Dear

Painter & Decorator Internal & External

nigeldear@icloud.com

01892 664698 or 07710 798553

## Camrass Wills

✦ KENT & SUSSEX ✦

Advice you can trust

Wills

Powers of attorney

Probate

Funeral plans

**Help & advice**

**Home visits**

**All fees agreed**

**before you proceed**

**For a free initial consultation contact:**

**Peter Camrass** DipPFS MSWW

**01622 720985 or 07747 007971**

[www.camrasswills.co.uk](http://www.camrasswills.co.uk)

## Coxheath Veterinary Surgery

6 Westerhill Road, Coxheath, Maidstone ME17 4DG

Patrick Tibbitts BVSc(Massey)MRCVS

Caroline McIlwaine BVSc(Pretoria)MRCVS



**Professional Pet Healthcare in a  
Bright, Caring, Friendly Atmosphere.  
Modern Diagnostic & Operating Facilities.**

Opening hours: Mon/Fri 8.00 am - 7.00 pm Sat 8.00 - 12 noon  
Consultations by Appointment Only

For appointments and emergency cover **Tel: 01622 743888**

## Atmosclear Building Services Ltd

Forstal Business Park, Paddock Wood TN12 6PY

Kitchen & Bathroom Design

Supply & maintenance of Heating,

Ventilation, Refrigeration and

Air-Conditioning systems

e: [sales@Atmosclear.biz](mailto:sales@Atmosclear.biz) / w: [www.Atmosclear.biz](http://www.Atmosclear.biz)

t: 01622 816 820



**Atmosclear**



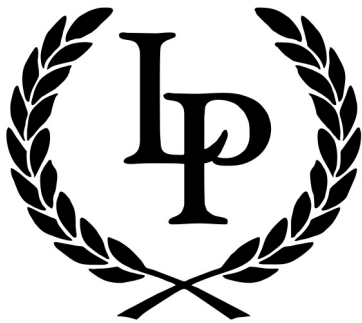
# PATTENDEN

## VET CLINIC



**Your independent, family vet practice**

Segro House, Pattenden Lane, Marden, Kent. TN129QJ  
Tel: 01622 397900 Email: info@pattendenvets.com  
[www.pattendenvets.com](http://www.pattendenvets.com)



**Established  
2007**

## LAUREL PROJECTS

### Painters



### Decorators



07967 428 811

01622 831 272

[Laurelprojects.co.uk](http://Laurelprojects.co.uk)

[laurelprojects@btinternet.com](mailto:laurelprojects@btinternet.com)



## TRADITIONAL AWARD WINNING VILLAGE INN

Good Quality Value for Money Menu  
Real Ales, Selection of Wines

*During COVID restrictions we offer  
Our Take Away Menu &  
Delicious Takeaway Afternoon Teas*

Delivery may be possible in the Parish  
for vulnerable or self isolating customers

Updates online and  
on Facebook: @chequersladdingford

**01622 871266**

[www.chequersladdingford.co.uk](http://www.chequersladdingford.co.uk)



**BASKET PLANTS  
GERANIUMS  
BEDDING PLANTS  
PERENNIALS  
COMPOST  
PLUS MUCH MORE**

THURSDAY - SUNDAY / 10.30 - 5.00  
TEL: 01622 815900 BENOVER ROAD - YALDING

**[www.trilliummontessorihouse.co.uk](http://www.trilliummontessorihouse.co.uk)**

Spaces available from September  
Nursery and Pre-School for children aged 2 to 5  
"Free for Two", 15 & 30 hours funding available.

St. Justus Church Hall  
Mount Pleasant  
Paddock Wood  
TN12 6AH



**Trillium**  
Montessori House

Call: 07848 855820  
or 01892 835710

### YALDING YOUTH CENTRE, VICARAGE Rd

Available for hire and ideal for children's parties.  
Two halls, main hall can take bouncy castle.  
Good kitchen facilities. Outside play area. Parking.

Call Martin & Gail Johnson for details and bookings  
01622 815498

## The Bush, Blackbird and Thrush

Your local 15th Century Pub and Restaurant  
We are pleased to offer you:

Home cooked quality food, served lunchtime and evenings  
Large beer garden and ample parking  
Large Open Fireplace  
Real Ales straight from the barrel  
A fine selection of Lagers, Spirits and Wines

Quiz Nights on Tuesday Evenings  
Warm and friendly atmosphere  
Traditional Bat and Trap during summer evenings.  
Disabled facilities  
Functions and Events can be catered for.

**Telephone: 01622 871349**  
Bush Road, East Peckham TN12 5LN



# Woolpack Inn

01892 730356

Benover, Yalding



Dave and Renata  
Welcome you to the "Woolpack Inn"  
Renowned for its good food and hospitality.

Fine Cask Beers & Lagers,  
Home Cooked Meals & Bar Snacks  
Large Gardens

24 Hour Emergency  
Service  
Home Visits  
Private Chapel of Rest  
Full Fleet of Modern &  
Vintage Vehicles



Floral Tributes  
Catering  
Memorial Masonary  
Pre-paid Funeral Plans  
Repatriation



## HENRY PAUL FUNERALS

Contemporary and Traditional Services



HEAD OFFICE  
Pembury  
01892 825505

FUNERAL DIRECTORS &  
MEMORIAL SHOWROOM  
Tonbridge  
01732 605002

FUNERAL  
DIRECTORS  
Southborough  
01892 458338

[henrypaulfunerals.co.uk](http://henrypaulfunerals.co.uk)

**Queenie's Dog Grooming & Spa**  
Your Pooch Treated Like Royalty

AT THE HOP FARM  
01622 871861

[QueeniesDogGrooming@gmail.com](mailto:QueeniesDogGrooming@gmail.com)

## LADDINGFORD COUNSELLING

Anxiety, depression, low self-esteem, addiction...

**You deserve good mental health. We are here to help.**

One to one counselling. We also offer:

Specialised Mental health workshops for companies,  
schools, café's and more.

MBACP Registered  
Sandy Paine: 07399 154471  
Sara Ramlot: 07827 159577  
[www.laddingfordcounselling.co.uk](http://www.laddingfordcounselling.co.uk)  
[enquiries@laddingfordcounselling.co.uk](mailto:enquiries@laddingfordcounselling.co.uk)

Contact for more information.

**bacp**  
Registered Member 374972  
MBACP

# LITTLE EDEN



01622 833088

Hairdressers and barbers  
Colouring experts  
Cutting and styling  
Affordable prices  
Fully qualified and experienced staff  
Warm welcome and friendly service

LITTLE EDEN LTD, BANK HOUSE, CHURCH  
GREEN, MARDEN, TONBRIDGE,  
KENT. TN12 9HS



## Yalding Tree & Hedge Services



All aspects of Tree Surgery

- Hedge Cutting • Stump Grinding
- Free Estimates and Advice • Fully Insured
- Over 20 years experience

Ross Taylor NCH ARB  
01622 817678 or 07527 826864  
[yaldingtrees@outlook.com](mailto:yaldingtrees@outlook.com)



## Parkinsons

Appliance Services Ltd

07766 607251

Repairs / Sales / Service

Washing Machines, Dishwashers, Cookers, Ovens  
Tumble Dryers, Storage Heaters Etc

**Fast, Friendly Service**



**Kerry Mann BSc (hons) OST**

**Registered Osteopath**

kerry.ostehealth@gmail.com

07958 705 797

**Structural and Cranial  
Treating Adults, Children & Babies**  
OSTEOPATH Reg 1997

**www.eastfarleighosteopathy.co.uk**

Yalding Surgery, Benover Road. ME18 6ES

296 Upper Fant Road, Kent ME16 8DA

**The Essential Curtain Company**

Email: theessentialcurtain@gmail.com

**Tel: 01892730252 Mobile: 07813 750117**

Specialising in hand stitched curtains, roman, Velox and roller blinds, and a variety of other soft furnishings.

I bring the shop to your home.

**TRACEY BENTLEY**

(Estimates are free)

 **Little Brittany**  
Crepes - Bespoke Catering for your event!  
**07850 318 314**

Available for Festivals, Farmers Markets, Fetes,  
Fayres and Private Functions including Weddings,  
Engagements and Private Parties.

Contact us now to discuss your options

**www.little-brittany.co.uk**

## **Circuits Class**

**Thursdays 7.30pm in Yalding  
Village Hall. Only £5.00 for a  
fun, varied class**

**07900 311359**

**www.petebrooksfitness.co.uk**

**Work at your own pace  
all fitness levels welcome**

## **PAUL'S CARPET CLEANING**

**Professional Carpet, Upholstery  
and Leather Furniture Cleaning  
Stain and Odour Removal  
Deodorise and Protect**

**01622 813514**

**07950 053200**

**paulcarpetfresh@gmail.com**

This Space available for  
**YOUR Advertisement**

Please contact Lara Franklin at  
**ylpm.advertising@gmail.com**

## **Town & Country WINDOW CLEANING**

**Family business  
Est since 1982**

- Domestic
- Light Industrial
- Office
- Contractual

**CALL STEVE ON  
07747 334422**

## **C Ladbroke Local Qualified Electrician**

All types of Electrical work undertaken

Free Estimates

24 Hour Call Out

Fully Insured

**Call Chris on 07860 181406**



## **STREET DANCE CLASSES**

Yalding Youth Hall - Thursdays

3.45pm 4-7 years 4.45pm 13 years +

5.30pm 8-13 years

All suitable for girls and boys

**www.lrsd.co.uk**

**07793 020601**

**hello@lrsd.co.uk**



## YOGA IN YALDING

All levels welcome!

**Group, private and 1 2 1 classes**  
Covid safe, by Zoom and in Yalding

*Yoga promotes  
Physical and Mental Wellbeing*

**Contact Natalie: 07813623266 or  
hello@happynatyoga.com**

## THE WHETSTED WORKSHOP

**All aspects of  
building · roofing  
joinery & carpentry**

**TEL: 01892 832455**

**MOB: 07813362537**

**E: whetstedworkshop@yahoo.co.uk**

## David Terry PLASTERING

**Professional plasterer in Maidstone. Established in 1996,**  
Offering affordable plastering and decorating solutions in  
Maidstone.

Over 15 years' experience specialising in all aspects of  
plastering and decorating,  
offering a professional and friendly service for all your  
home improvement needs.



[www.davidterry-plastering.co.uk](http://www.davidterry-plastering.co.uk)



**01622 661 780 / 07971 919 694**

## FREE RECYCLING COLLECTION SERVICE

Why pay to have your old electrical items collected? Or queue at Tovil  
Refuse Site having struggled to get them into your car?

We are a fully licenced service and will collect anything electrical or  
electronic in any condition or size FREE OF CHARGE and fully recycle to  
avoid land-fill.

\*We are currently having to make a small charge for refrigeration, TVs and  
Monitors

**Call Adrian and Penny Weaver-Coles - 01622 812928 07884  
183541 or email [info@wecollectltd.com](mailto:info@wecollectltd.com)**

Upper Tier Carrier Broker Dealer Registration no: CB/ZE5499VW



**We Collect**  
limited

## The George YALDING

*The family warmly welcome you to our pub.*



The family warmly welcome you  
to The George, Yalding

Atmospheric family friendly pub,  
outside events including a great garden  
for many uses including new fishing  
facilities and live music.  
New children's playground.

**01622 814376**

## Paul J. Rowland Funeral Directors Ltd **01622 757177**

15 Mid Kent Shopping Center, Castle Road, ALLINGTON,  
Maidstone, Kent ME16 0PU

**01622 662661**  
4 Hillary Road, PENENDEN HEATH,  
Maidstone, Kent. ME14 2JP

24 Hours A Day – 365 Days A Year  
SERVING THE COMMUNITY OF ALLINGTON  
MAIDSTONE AND THE SURROUNDING AREAS  
We offer a full range of services and facilities,  
Home arrangements at your convenience

Free car parking

Company Director: Paul J. Rowland

**AN INDEPENDENT FUNERAL DIRECTOR**

## WOODFALLS

Office and Storage space for rental. Competitive rates  
set in a well maintained rural setting. CCTV.  
Good parking. Please contact for availability.

**Tel: 01622 871378**



## Autocollect

**CARS VANS & MOTORCYCLES**

**WANTED ANY CONDITION, CASH PAID**

**Mark: 07736 284848**

**Paddock Wood, Kent**

**[wellard2640@gmail.com](mailto:wellard2640@gmail.com)**





## Charlotte Tabor

Jewellery Designer/Maker



*Gifts Commissions Repairs*

**When you shop from a small business a person actually does a happy dance!**

For more info: [www.karajewellery.co.uk](http://www.karajewellery.co.uk)  
Or contact Charlotte on Tel: 07973 955994

Phone for an appointment

## "THE AERIAL MAN"

TV & SATELLITE AERIAL INSTALLERS

Your local family firm  
Est for 38 years

**01622 871614**  
**01732 883542**



## impact decoration

**Painting & Decorating - Interior & Exterior**  
**City & Guilds Qualified**  
**Dulux Select Approved Decorator**

Fully Insured  
Domestic & Commercial Clients  
Virtually Dust Free Sanding  
Wallpaper Hanging

**Sam Gregory**  
**07882 597433 - 01732 873726**  
[www.impact-decoration.co.uk](http://www.impact-decoration.co.uk) [info@impact-decoration.co.uk](mailto:info@impact-decoration.co.uk)

This Space available for  
**YOUR Advertisement**

Please contact Lara Franklin at  
[ylpm.advertising@gmail.com](mailto:ylpm.advertising@gmail.com)

## ALL LOADS Ltd

SPECIALIST IN SUPPLYING AGGREGATES, TOPSOIL,  
TURF, SLEEPERS, TO TRADE AND THE PUBLIC



All Loads is a family run business. Managing Directors, Ryan and James Latham have gained valuable experience within a family run haulage business, which has been operating for over 40 years.

We pride ourselves on ensuring outstanding customer service at all times.

We can supply aggregates, decorative aggregates, building materials, and recycled building and landscaping materials. We now also offer GRAB Loaders.

We will be more than happy to answer any queries you may have with regard to our products and services.



### Aggregates

- Rock Salt
- Building Sand
- Sharp Sand
- Ballast
- Plastering Sand
- Reject Sand
- Type 1
- Pea Shingle 10/20mm

### Horticultural

- Rock Salt
- Seasoned Logs
- Premium Topsoil
- Mushroom Compost
- Bark/Ornamental
- Woodchip/Mulch
- Turf
- Sleepers grade A
- Sleepers NEW Oak

### Recycled Materials

- Blended Soil
- Bulk Bag
- Hardcore
- Crushed Concrete
- Concrete Fines
- Granite Kerbs

## David Gerrish Garden Maintenance



[davidgerrish@hotmail.co.uk](mailto:davidgerrish@hotmail.co.uk)

**07840 566343**

## ACCOUNTS FOR SMALL BUSINESSES

### QUICKBOOKS EXPERT

individual tuition provided

Preparation of VAT returns: Book-keeping.  
Friendly and professional service- stress free

For further details contact Catherine:

**01622 872081 or 07900 568613**

DELIVERY AVAILABLE TO: TUNBRIDGE WELLS, TONBRIDGE, SEVENOAKS, MAIDSTONE AREAS

**\* SPECIAL PRICES ON BULK ORDERS \***



**free local delivery**  
**01622 873231**



Email: [aggregates@allloads.co.uk](mailto:aggregates@allloads.co.uk) - [www.allloads.co.uk](http://www.allloads.co.uk)

ALL LOADS LTD, Little Budds Farm, Gravelly Ways, Laddingford, Maidstone, Kent ME18 6BZ



Children aged 2 - 4 years old

Yalding Village Hall, Lyngs Close  
Wednesdays at The Baptist Hall  
01622 814024

[admin@yaldingPreschool.co.uk](mailto:admin@yaldingPreschool.co.uk)

Charity number 1052236



### BOE Pet Services

Professional, reliable, local dog walker.  
Over 20 years experience.  
Insured and canine first aid trained.  
References on request.  
Call Sarah on: 07772436234

### RIXSON Heating and Plumbing

All heating & plumbing work undertaken

**FREE QUOTATIONS**

**07957 636269**

### Yalding Village Hall

All functions and Activities can be booked.

**Kitchen available**

Contact booking officer by email [SueGerrish@gmail.com](mailto:SueGerrish@gmail.com)  
(preferred), or phone 01622 814163



### C&J Jetwashing Services

Driveways - Patios - Decking

**Charlie Kavanagh**  
TEL: 07957 168780

[charlie00kavanagh@gmail.com](mailto:charlie00kavanagh@gmail.com)

Reliable & Professional Jet washing service for  
all your driveways, Patio's and decking.

### Cedar Counselling - Karen Lambert

Qualified Counsellor

Specialising in Bereavement Counselling along with other issues, including:

Relationship problems  
Work performance/issues  
Anxiety and Stress  
Lack of self-confidence  
Coping with a chronic or terminal illness



07766 704 647

[karen@cedar-counselling.co.uk](mailto:karen@cedar-counselling.co.uk)  
[www.cedar-counselling.co.uk](http://www.cedar-counselling.co.uk)



## SCAFFOLDING

MT Scaffolding Services

Please call Mark for a free quotation on  
**01892 825848 / 07770 947888**

Local professional business, with old fashioned core values  
Very competitive pricing providing a reliable service  
Fully qualified and insured with over 30 years' experience  
Residential & Commercial Premises



**TaxAssist Accountants**

The Accountancy and Tax Service for Small Business

### The Small Business Champions

- Startup Advice
- Fixed fees Agreed in Advanced
- Companies / Partnerships
- Self Employed / CIS / Landlord
- Corp & Income Tax / PAYE / VAT

Call for a friendly, free initial discussion without  
obligation on

**01892 834411**



## IKD Kitchens and furniture

Design – Manufacture – Installation

### Local showroom:

6 Woodfalls Industrial Estate  
Laddingford, ME18 6DA

**Telephone: 01622 871190**

**Mobile: 07932 797576**

Email: [info@ikd-int.co.uk](mailto:info@ikd-int.co.uk)  
Website: [www.ikd-int.co.uk](http://www.ikd-int.co.uk)

# MK A

## MID KENT AESTHETICS CLINIC

Your face is safe in our hands



Non-surgical cosmetic procedures carried out by specialist doctors in our new clinic near Yalding. We use only world leading dermal fillers & anti-wrinkle therapy.

- \* Dermal Fillers
- \* Anti-Wrinkle Therapy
- \* Facial Peels
- \* Obagi Skin Care



01622 296247 07368 5588310



[midkentaesthetics@aol.com](mailto:midkentaesthetics@aol.com)



[www.mkaclinic.com](http://www.mkaclinic.com)

## Pre-School based in Teston Village Hall



Open from 09.00am – 2.30pm Monday to Friday  
Optional early morning drop offs at 08.30am

Quality pre-school care and education since 1966  
Ages 2 years to School age.

15 hours free entitlement for 3 & 4 year olds  
Approved provider of the 'Free for 2' funding scheme  
Extended 30 hour entitlement available

### All fully qualified staff

*Activities tailored to each child ensured my child was ready for school in a way I could not have done myself*  
(Mum of a 4 year old)

**Enquiries to: Tina Driver – 07805 796353**  
**or email – [tandwngroup@gmail.com](mailto:tandwngroup@gmail.com)**

[www.testonandwateringburypreschool.co.uk](http://www.testonandwateringburypreschool.co.uk)



**Michelle Spittle**  
**HUMAN RESOURCE SOLUTIONS**

[info@michellespittlehr.co.uk](mailto:info@michellespittlehr.co.uk)  
07392 997028

- |    |                                 |    |
|----|---------------------------------|----|
| >> | HR Shared Service               | << |
| >> | HR Audit Controls               | << |
| >> | HR Policy Review                | << |
| >> | Recruitment and New Starters    | << |
| >> | HR Plans and Objectives         | << |
| >> | Absence Management              | << |
| >> | Health and colleague well-being | << |

**[www.michellespittlehr.co.uk](http://www.michellespittlehr.co.uk)**

## Dragon Property Maintenance Services



**Your local handyman based in Yalding**

**Experts in all aspects of Garden and Property Maintenance**

See our website for details or call  
**01622 814854 / 07704 501438**

[www.dragonpmservices.co.uk](http://www.dragonpmservices.co.uk)



*Yalding Village Club Welcomes You.*

Mon-Fri 3pm till 11pm Sat & Sun 12 noon till 11 pm

Sun lunches 12 till 5pm. Outside Bars

Venues for Weddings, Parties, Wakes etc.

Telephone Peter 01622 814123

## **Village Pensioners Club (VPC)**

*a club for the retired*

Meetings fortnightly in Yalding Club - Tuesday 2-4 pm

For details contact: The Club on 01622 814123

## **Anita's Alterations**

*Breathe new life into your wardrobe*

*From taking up a hem to re-shaping a jacket*

*Swift and professional service*

Call Anita on 01622 813460 or 07956 647614

## **Yalding Parent, Baby & Toddler Group**

Weekly informal get together for all pre-school ages and their carers

Term time Wednesdays 10am to 12 noon

**Yalding Village Hall**

Just pop in and ask for Sophie, Hayley or Karen

Call 01622 814453 for more info

## **Pizienwell Arts** Framing & Gallery

You Create It  
We'll Frame It  
You Display It

Framing Repairs and Re-glazing undertaken

For free advice and quotes  
come to the studio at

**Court Lodge Farm, Forge Lane,  
East Farleigh ME15 0HQ**

visit [www.pizienwellarts.com](http://www.pizienwellarts.com) for opening hours  
Tel 01622 728670 eMail [info@pizienwellarts.com](mailto:info@pizienwellarts.com)



**Your local Clock &  
Watch Repairers &  
Antique Shop**



**Lees Road, Yalding, ME18 6HB**

**01622 817315**

**[clocks1066@hotmail.co.uk](mailto:clocks1066@hotmail.co.uk)**

**We make them  
We sell them  
We deliver them**

**Bedz4Zzzzz**  
Retail Limited

**"Beds handmade  
in Kent"**

**[www.bedz4zzzz.co.uk](http://www.bedz4zzzz.co.uk)**

# YALDING ART GROUP



## Arts & Crafts Fair

Sunday, 5<sup>th</sup> September 2021

11am until 4pm

At The Village Hall, Lyngs Close, Yalding.

[www.yaldingartgroup.weebly.com](http://www.yaldingartgroup.weebly.com)

FREE ENTRY - REFRESHMENTS

We are patiently waiting to all meet up again and at times, the wait seems very long!

However, I have decided to sort out a date for the Arts & Crafts Fair. It was to be on Sunday, 4th July 2021 - however, there is no guarantee that there will be a venue, so I had to rethink.

I have chosen Sunday, 5th September instead. I know this seems such a long way away, but I don't want to make plans only to disappoint everyone. By making it so late in the year, I am hoping we will be able to go ahead.

I will obviously keep everyone posted, but if you do want a stall, I am taking names, but I won't be

contacting everyone until 6 weeks before the event to finalise details.

We will probably have to do a one way system and all food might still be takeaway only, but I'm sure we can work something out.

It will be great to see all the regular stall holders plus a couple of new ones. So open your dusty diaries and come and see all our artisans from 11am until 4pm.

Personally, I just cannot wait, so I'd better start painting - that time will simply fly!

I changed the picture on the poster as it is nearly a year since our good friend Graham Ball passed

away, and I particularly like this flower study of his.

Our artists have been posting on JuneChapmanArt facebook page, but I think we are all flagging a bit - we are all having jabs now, so hopefully the time to meet up is getting nearer.

We need inspiration from each other, so here's to lockdown finally ending and we get together - hopefully with the sun shining and sitting by the river!

See you next month with what I hope is news of when we can start meeting again.

Cross your fingers...

**June**

# VILLAGE CONTACTS

## CHURCH CONTACTS

Vicar - Father Paul Kish.....01622 814182  
 Vicar@YaldingChurches.co.uk  
 Curate: Rev'd Lisa Cornell  
 Curate@YaldingChurches.co.uk

Churchwardens.....01892 730910  
 Jeremy Tenison-Smith  
 PCC Treasurer .....01622 817919  
 treasurer@yaldingchurches.co.uk  
 Joint Parish Giving Officers  
 Joy & Jonathan Virden .....01622 814509

Junior Church  
 Rachel Curley.....01622 814159  
 Bellringers  
 Richard Young.....01732 669782  
 Choir  
 Daniel Sharman.....01892 723884

RC Church of St.Francis.....01622 756217  
 Yalding Baptist Church  
 Rachel Bushnell.....01622 817337  
 Carol Featherstone.....01622 812838  
 Little Fishes  
 Rachel Bushnell.....01622 817337  
 jnfloresster@gmail.com  
 Churchyard Working Party ("The Vandals")  
 Paul Mahoney.....01622 814369  
 Yalding Church Preservation Society  
 Peter Chapman.....07973 839266

## EDUCATION

Yalding School Head  
 Mrs Sarah Friend .....01622 814298  
 PTA: Emma Peskett  
 chair@YaldingPTA.co.uk  
 Laddingford School Head  
 Mrs Gemma Hitch.....01622 871270

Yalding Library .....01622 817735  
 Yalding Pre-School.....01622 814024  
 admin@yaldingpreschool.co.uk  
 Yalding Parent & Toddler Playgroup  
 Sophie O'Donnell .....07807 242904

## HELPING HANDS

Volunteer transport for medical appointments  
 Cabs for Jobs (Yalding Taxis).....01622 814343  
 Jenny G 01622 817439 Jane.....01622 814002  
 Jenny S 01892 459041 Barbara .....01622 814038

## PARISH COUNCIL

Chair: Geraldine Brown.....01622 814222  
 chairman@yaldingparishcouncil.gov.uk  
 Clerk: Angela Gent.....01622 814134  
 clerk@yaldingparishcouncil.gov.uk

## GOVT & LOCAL COUNCIL REPS

MP: Helen.Grant.mp@parliament.gov.uk  
 KCC: Paulina.Stockell@kent.gov.uk  
 Cllr: Paulina Stockell.....01622 842508  
 Cllr: David Burton.....07590 229910  
 Cllr: Annabelle Blackmore.....01622 833299

## DOCTOR (NHS 111 non-emergency)

Burgess Bank Surgery .....01622 814380  
 Friends of Yalding Surgery  
 Elaine Andrews.....01622 816951  
 PPG - James Guillum Scott.....01892 730308

## POLICE

Emergency.....999  
 Maidstone Rural.....101  
 RSPCA Cruelty Line.....0300 1234 999  
 RIVER BAILIFF  
 Bill Bird.....07568 183185

## VILLAGE HALLS

Yalding V. Hall Bookings.....01622 814163  
 Yalding Post Office.....01622 814327  
 Youth & Community Centre .....01622 815498  
 Laddingford Church Hall bookings ...01622 873450  
 Yalding Church Rooms (Clare).....01622 814027

## CLUBS & ASSOCIATIONS

Allotments: Susanna Barnwell.....01622 813309  
 Art Group: June Chapman.....01622 817324  
 Bee Keepers: Chris Morris.....07855 464667  
 Cricket Club: Martin Tripp  
 martin.tripp.cricket@gmail.com  
 Football Club: Steve Faulkner .....01892 263907  
 Garden Society: Joy Virden .....01622 814509  
 Relative Minors: H.Haddesley .....01622 749284  
 Rifle Range: Dave Woodger .....01732 843813  
 Table Tennis: Peter Camrass.....01622 720985  
 Village Voices: Karen di Marco.....01622 814267

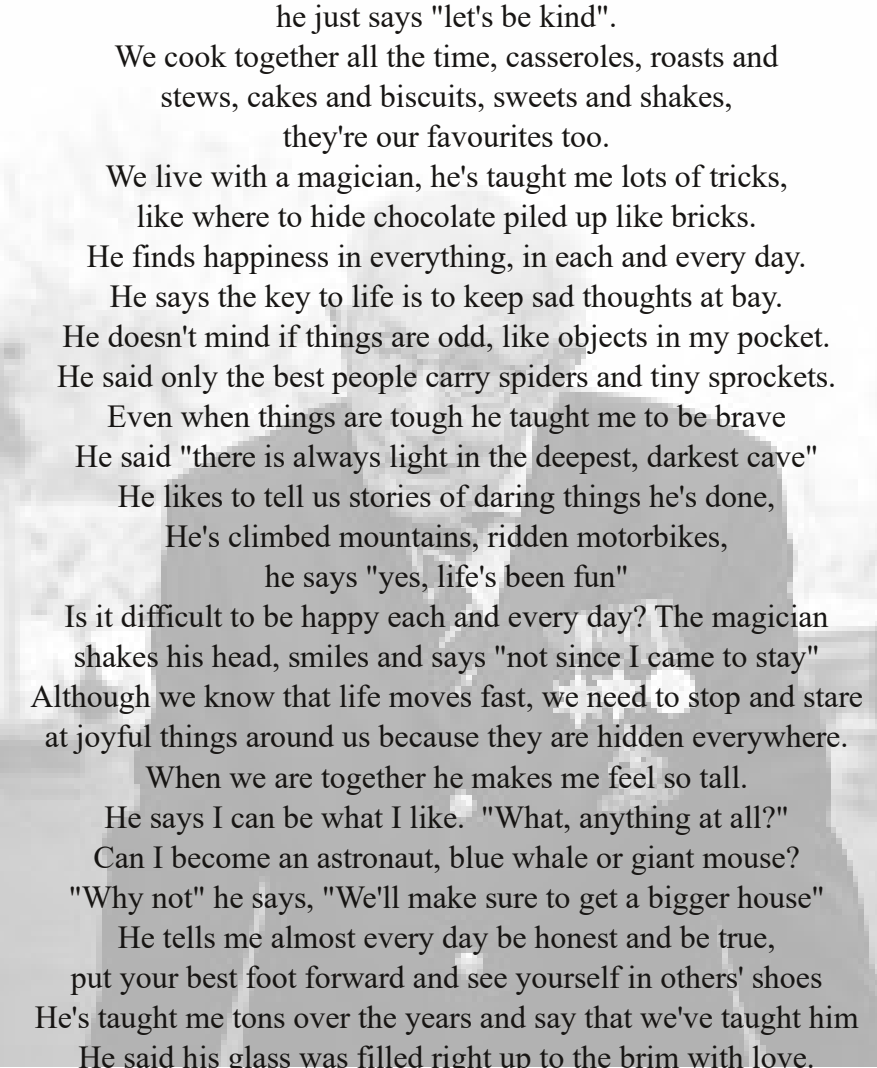
## SCOUTS

**Beavers (6-8), Cubs (8-10.5), Scouts (10.5-14)**  
 Sandra Grace.....01622 727040  
**Explorer Scouts (14-18)**  
 Eleanor Mead.....07539 890093



## The Magician

*co-written & read at his funeral by Georgia Ingram-Moore (granddaughter)*



We live with a magician, he makes us laugh all day,  
He knows what is important and what I really want to say.  
He's been beside me my whole life, seen every up and down,  
He lights the room with his quips, you will never see him frown.  
There's this sorcery in the garden, his clever quietening of our dogs,  
the tomato plants he made spring up, his workshop full of cogs.  
He eats porridge every morning and sips cocoa every night.  
He loves to go for walks outside, in the mornings when its bright.  
We live with a magician, he makes things disappear,  
like worries I had at the start of a school year.  
He makes masterpieces out of paper and stamps  
and string and glue,  
When dragons chased us in our games  
he knew just what to do.  
He tells stories of his loved ones, the people left behind,  
He does not cry, or moan, or shout,  
he just says "let's be kind".  
We cook together all the time, casseroles, roasts and  
stews, cakes and biscuits, sweets and shakes,  
they're our favourites too.  
We live with a magician, he's taught me lots of tricks,  
like where to hide chocolate piled up like bricks.  
He finds happiness in everything, in each and every day.  
He says the key to life is to keep sad thoughts at bay.  
He doesn't mind if things are odd, like objects in my pocket.  
He said only the best people carry spiders and tiny sprockets.  
Even when things are tough he taught me to be brave  
He said "there is always light in the deepest, darkest cave"  
He likes to tell us stories of daring things he's done,  
He's climbed mountains, ridden motorbikes,  
he says "yes, life's been fun"  
Is it difficult to be happy each and every day? The magician  
shakes his head, smiles and says "not since I came to stay"  
Although we know that life moves fast, we need to stop and stare  
at joyful things around us because they are hidden everywhere.  
When we are together he makes me feel so tall.  
He says I can be what I like. "What, anything at all?"  
Can I become an astronaut, blue whale or giant mouse?  
"Why not" he says, "We'll make sure to get a bigger house"  
He tells me almost every day be honest and be true,  
put your best foot forward and see yourself in others' shoes  
He's taught me tons over the years and say that we've taught him  
He said his glass was filled right up to the brim with love.  
We live with a magician, he makes things disappear,  
His final act was really smart  
He's left but he's still here

*To a wonderful man - who in his final year taught us all humility and kindness.*