

Yalding & Laddingford

Parish & Church Magazine

£1.00 per issue



November 2021

St.Peter & St.Paul, Yalding with St.Mary's, Laddingford

Church website

www.yaldingchurches.co.uk

Further information can be obtained by contacting

Father Paul Kish or the Churchwardens

(contact details are in the magazine).



FRONT COVER REMEMBERING HORSES OF WAR

This month's photograph is of a painting by equine artist Cheryl Johnson honouring the memory of horses of war. Although we remember our war dead on the 11th day of the 11th month when the First World War was declared over, the purple poppy is worn in remembrance of all animals caught up in war.

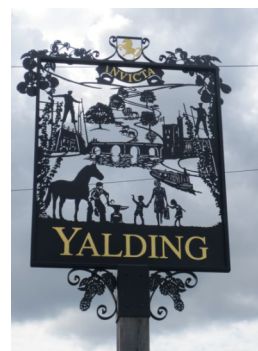
The most decorated animal earning the most Dicken medals from the RSPCA is the humble pigeon. Pigeons often get a bad press but they are an amazing bird. They were used extensively during WW1 carrying vital messages from the front. Homing pigeons flew miles to get home, often seriously injured.

Horses were used in WW1 which is also known as a transitional war due to the development from horse artillery to tanks, shells and heavy bombardment. Before this time, horses had an advantage of being very manoeuvrable, fast and a rider has a distinct advantage over a man on the ground.

Many, many horses were killed during WW1 and thousands were left in France as it was too expensive to ship them back to the UK.

Their story was brought to the public by Michael Morpurgo with his story War Horse. Although fiction, it hits home how terrifying war is both to humans and animals.

We will remember and say a prayer on the 11th November.



EDITOR'S NOTES

I've had lots of phone calls and emails regarding last month's front cover photograph. It is really lovely to have so much interest in the history of Yalding and the part Moncktons played in it.

I too am fascinated with the photograph and history so I spent an hour with Tony Monckton who at 91 years old told me such interesting stories of the time his Dad and Uncle started the company and the history of how they transported hops locally and further afield to London for many years as well as other goods.

Also, on his living room wall is the photograph and the date it was taken. Question solved and you can learn more on page xxx

And I have to say, Tony does not look 91 years old at all - he must tell me the secret of looking so young.

I have tried to put all the information together with more photographs plus snippets from other sources which I hope makes interesting reading.

It is November and we all reflect on the sacrifice of the few for the many. I will be reflecting on the conflicts which have gone before and are still ongoing by taking a few minutes on the 11th. I'm sure you will join me.

The big event of the year needs your help. Yes, our lovely Yuletide Market is back after a two year absence from the High Street. It takes a lot of organising, but it is the highlight of the Christmas period. So, if you can spare some time to help, please do - you will enjoy yourselves I promise.

DEADLINE FOR COPY & ADVERTISING

10th of every month

Editor: June Chapman

mag@yaldingchurches.co.uk

Advertising: Lara Franklin

ylpm.advertising@gmail.com

MAGAZINE TEAM

EDITOR

June Chapman

mag@yaldingchurches.co.uk

07925 201617

ADVERTISING

07525 787204

Lara Franklin

ylpm.advertising@gmail.com

07785 974951

TREASURER

Graham Spillman

01622 813771

DISTRIBUTION

Martin Williams

01622 815403

CHURCH SERVICES IN THE PARISH

St Peter and St Paul, Yalding

7th Nov	6pm	Benefice Memorial Service
11th Nov	10.50pm	Memorial Service @ The War Memorial
14th Nov	9.30	Remembrance Sunday Communion Service
Sundays	9.30	Holy Communion
4th Sunday	10.00	All Age worship
Mondays	13.45	Little Fishes (monthly on 2nd Monday) in church
	19.00	Prayer Group (weekly in person) at Cob End.
		You are more than welcome to join us
		If you would like us to pray for you, please ring 01622 813995
		or email annetelfer7@gmail.com
Wednesdays	10.00	Holy Communion, Lady chapel (Traditional)

If you would like to receive Father Paul's weekly email to the congregation, please let him know by emailing vicar@yaldingchurches.co.uk

St Mary's, Laddingford

4th Sunday	9.00	Holy Communion
------------	------	----------------

St Margaret's, Collier Street

Sundays	11.00	Holy Communion
---------	-------	----------------

Catholic Mass at the Church of St Mary the Virgin, Nettlestead

Sundays	9.30	All welcome
Contact:	Fr Alastair Ferguson 01892 838220 · 07887 925356 alastair.ferguson153@gmail.com	

Yalding Baptist Church

Sunday Worship Services with Junior Church

at 10.30 Zoom ID 857 4184 1757 ALL WELCOME

7th November	Visiting speaker Jonathan Gooch
14th November	11am at the War Memorial followed by 11.30am Communion Service (no Jnr Church)
21st November	10.30 Special Focus on climate change in the developing world at our All Age Service:
28th November	Kitchen Crew (age 11+)
Home Group	Fortnightly Wednesdays at 8.15pm Please contact for venue

You can listen to our sermons on our YouTube channel

Contact: James & Rachel Bushnell 01622 817337, rachbush75@hotmail.co.uk
yaldingbaptistchurch.my-free.website www.facebook.com/yaldingbaptistchurch

The 100 Club October Draw

1	Jonathan Virden	17
2	Martin Roberts	11
3	Andrew Bullen	58

The next draw is on the 7th November 2021
 Richard Young 07734 960706 or 01732 669782
 email: richwyong@aol.com



PARISH LETTER

Christ is King

As this edition of the parish magazine is published, we are approaching the last Sunday of the Christian year, celebrated as the festival of Christ the King on 21st November. While I certainly wouldn't hold myself up as a king in any sense, recently taking over increased responsibilities at work has led me to reflect on the nature of leadership.

As a nation, we have an oddly polarised relationship with our leaders. Sometimes we put them on a pedestal, and sometimes they move from heroes to villains very quickly. We find it difficult to remember that most of the time they are normal people dealing with their own challenges, just like us, simply trying to get on with their lives.

People's perspectives on the monarchy are polarised too, with people holding different views on the extent to which a constitutional monarch should continue to be Head of State; and, indeed, Head of the Church of England.

Often, we focus on the wealth, power and pageantry that comes with leadership and kingship. We would do well to remember too that leadership brings with it grave burdens of responsibility. At this time of year, on Remembrance Sunday we remember the sacrifices of members of the armed forces. While we remember those who have suffered and died to protect our freedom, I imagine those involved in decisions to send people to war, and to withdraw from conflict, also reflect on the cost of their decisions. For all really significant leadership decisions are ambiguous, and come with a cost.

Perhaps this indicates that true leadership has to be relational; leadership is at its heart about the relationship between leaders and led, government and citizens, kings and subjects. Perhaps it is the nature of this relationship that defines the quality of leadership.

While kingship can be authoritarian, Jesus was a different kind of leader. The festival of Christ the King celebrates Jesus' model of kingship, where a just and gentle approach to ruling is a contrast to what we often see in the world. Christ shows us a different model of leadership – one that focuses on service to others, compassionate action and care for his people. Jesus came to serve, not to be served (Matthew 20:28). Jesus doesn't force us to follow him; instead he calls us, and we are to respond.

While we consider the rewards and burdens of leadership, we can lose sight of the purpose that leaders should seek to achieve. The sacrifices commemorated on Remembrance Sunday are mirrored by the Son of God offering up his life for the sins of the world, to achieve the objective of his leadership on earth; to grant to the greatest measure of freedom that anyone could ever know, salvation from sin.

As he gave his life for us, he asks us to give of our lives for others and for his sake. When we help other people, we help Jesus. When we visit people who are ill we visit him. When we feed the hungry and comfort the lonely, when we share other people's troubles and listen to people who are afraid, we are doing it with Jesus. In doing these acts we are glorifying Jesus's idea of kingship and service, and glorifying his name. In this way we are acting as citizens of God's kingdom, and Jesus is our king.

“Pilate asked him, ‘So you are a king?’ Jesus answered, ‘You say that I am a king. For this I was born, and for this I came into the world, to testify to the truth. Everyone who belongs to the truth listens to my voice’” (John 18:37)

Justin Elks

Licensed Lay Minister



YALDING POST OFFICE

High Street, Yalding
Kent, ME18 6HS

01622 814327

Opening hours: 09.00 - 13.00; 14.00 - 17.30

Early Closing Wednesday & Saturday
www.yaldingpostoffice.weebly.com

The old £50 and £20 notes are now classified as "outmoded". They can no longer be used in shops, but can still be deposited into bank accounts for a further 20 years.

Post Office Card Account. (POCA) This interests those that don't have access to a regular bank account. The end of POCA will now be the end of November 2022.

Dept of Work and Pensions (DWP) will replace the card with a payment voucher service, issued either on a card, a text or an email attachment, and will be operational by August 2022. I will publish more details as appropriate.

Tim's Regular Reminders

- **Please observe Covid rules still in force** for your own safety – and mine too! One person or domestic bubble in the shop at any one time. Masks are discretionary.
- **We offer all main PO postal & basic banking services:** Free cash withdrawals on most debit cards; pay bills; top up phones, energy meters & keys; buy fishing licences, Moneygram, Health Lottery etc.
- **International parcels** (includes EU) must have a correctly completed customs label, with the SENDER's ADDRESS.

If you are VAT registered and trading under Etsy, EBay, Amazon etc you must declare the VAT on your goods when mailing to the EU.

- **Foreign Currencies.** We stock Euros and US \$, and can order other currencies, as you plan your trip abroad. Credit on Travel Money cards is refundable in UK £s.
- **The Post Office Gift Card** is an ideal gift for that person hard to buy for. They can be used at pretty much every major retailer in the UK and online. See us for details.

Shop and local produce

Croissants and other pastries available on Fridays & Saturdays only. Coxheath bakery items on sale every day. Orders taken.

Cold drinks, unique greetings cards by local artists, Melanie's ceramics, Yalding honey, Joan's jams. Bit Spicy curry mixes, hand-made fabric items, stationery, Yalding mugs, fresh eggs from local chickens, Loddington Farm fruit juices & Oakapple Farm fresh produce – all in stock now.

New stamps sets this month are the DC Collectables (Batman) and Rugby Union collections.

INTERNATIONAL POSTING DATES

Africa	Wed 8	Ireland	Thu 16
Asia	Wed 8	Italy	Mon 13
Australia	Mon 6	Luxembourg	Sat 18
Austria	Wed 15	Malta	Fri 10
Belgium	Sat 18	Middle East	Wed 8
Canada	Sat 11	N. Zealand	Mon 6
Caribbean	Wed 1	Netherlands	Thu 16
Cntrl America	Wed 8	Norway	Thu 16
Cyprus	Sat 10	Poland	Mon 13
Czech Rep	Mon 13	Portugal	Thu 16
Denmark	Thu 16	S America	Wed 8
E Europe	Sat 11	Slovakia	Thu 16
Far East	Wed 8	Spain	Thu 16
Finland	Mon 13	Sweden	Mon 13
France	Sat 18	Switzerland	Thu 16
Germany	Thu 16	Turkey	Sat 11
Greece	Sat 11	USA	Mon 13
Iceland	Thu 16		

CHRISTMAS 2021 UK LAST POSTING DATES

Saturday 18th December
2nd Class & 2nd Class Signed For

Tuesday 21st December
1st Class & 1st Class Signed For

Thursday 23rd December
Special Delivery (Guaranteed)



THE CHEQUERS INN

THE STREET
LADDINGFORD
KENT

ME18 6BP
01622 871266

It was great to be able to hold the Fun Flower & Veg show this year. It is one of our favourite events of the year and there was a really great turn-out of entries, thank you to everyone who put in exhibits and supported the day. There were a lot of lovely entries in the craft class, the judges found it a very difficult task to judge.

Congratulations to the winner Bella Kisch for her lovely quilt. This was made up of the shirts she wore while representing Great Britain in national polo cross competitions, what a lovely way of keeping these as a memento of her achievements.

The baking and cooking classes had some very, very tasty exhibits and the cakes baked by children were awesome.

Overall winner and **Best In Show was awarded to Dave Law for his delicious Foccacia Bread** which was lovely. The design class was very good fun-this year's challenge was to make a trolley that could carry 2 half pints of beer over a track of humps and bumps – there were 9 great designs-some more successful than others!! Well done to Andrew Duffy who completed the course and spilt the

least beer – check out a couple of videos on our facebook page. Full details of all the winners are below and **£275** was raised for Laddingford Primary School, thank you.

As the winter nights have drawn in we're now in to our Autumn and Winter events and are offering our winter menu with warming stews and pies and suet puddings.

With Christmas approaching the **Switching on of the Laddingford Lights 5pm and Laddingford School Christmas Fayre 3pm will be held on Saturday 20th November**. Come along and support the Fayre, sing a few carols and Light Up Laddingford.

The Christmas **Ladies evening will be held on Monday 15th November**. An ideal opportunity to get a few Christmas gifts, enjoy Charles' canapés and mulled wine and catch up with friends before the festive season. Come along any time between 6.30-9.30pm everyone welcome. We will be offering our Christmas menu in December and why not try our delicious afternoon teas, eat in or takeaway which will have a special festive twist. Order on 01622 871266. *Charles & Tracey*

Laddingford Veg & Flower Show Results 2021

	2 nd	1 st
Salad Vegetables	Symon Wilson	John Carden
Onions	Mary Smith	Roger Manklow
Squash, Gourd, Pumpkins, Marrows	Issy Bass	Jack Hywood
Any other vegetables	Symon Wilson	Sam Lane
Any type of fruit	Sam Lane	John Cardem
Childrens Drawing – Jungle Animals	Keela Harrison	Phoebe Hill
Novelty - vegetable/ flower animal (under 15 yrs)	Logan Chapman	Toby Gale
Childrens homebake Any cake or biscuit	Amber Thompson	Jack Orpin & Margo Duffy
Photography "My pandemic"	Fiona Turner	Ben Gretton
Art – portraits, pictures any medium	Anna G	Maddie Kisch
Crafts – any homemade item	Jean Stratton	Bella Kisch
Vase of Cut Flowers	Pauline Harper	Anna G
Single Stem Flower	Phil & Kim Keela	Pauline Harper
Indoor House Plant	Marion Barnes	Lou Gretton
Flower Arrangement "Cocktail Time"	Charles Leaver	Brigitte
Homemade Bread or Rolls	Elsbeth Fox	Dave Law
Home produce	Gwenn	Val Tandy
Home Bake	Archie & Sue Manklow	Brigitte
Mans Homebake - Savory	Johnathan Moat	Charles Newberg
Mans Homebake - Sweet	Richard Sender	Father Paul
Alcoholic Delight - beer & cider, wine, sloe gin	Harry Harrison	Andrew Duffy
The Owen Cup Home Design for Trolley Pulling	ANDREW DUFFY	
Dutton Forshaw Cup for Best Vegetable	JACK HYWOOD - Pumpkin	
Darmen Builders Cup - Best Flower in Show	BRIGITTE – Floral Arrangement "Cocktail Time"	
The Kennaird Cup for Best Homebake/Pie	DAVID LAW – Foccacia Bread	
Manklow Cup for Judges' Special Award	CATHERINE NEWBERG	
The Flexitec Cup for Best Exhibit by a child	TOBY GALE – Novelty Owl	
The Chequers Rosebowl for Best in Show	DAVID LAW	

COMMUNITY DIARY

NOVEMBER

1st onwards	Bottle donations for the Yuletide Christmas Market - collection point at the Post Office	
1st	Garden Society @ Village Hall	8pm
8th	Little Fishes - St.Peter & St.Paul Church	1.45-3pm
7th	Benefice Memorial Service	6pm Yalding Church
9th	Bags to School drop off at Twyford Pre-school	9am
10th	Collier St Pop In Cafe, St.Margaret's Church	2-4pm
11th	Service of Remembrance	10.50am Yalding War Memorial
11th	WI Meeting	7.30pm @ Village Hall, Yalding
14th	Remembrance Sunday Holy Communion	9.30am Yalding Church
14th	Parade & Service of Remembrance	10.50am Yalding War Memorial
15th	Christmas Ladies Night at the Chequers	7-9.30pm
15th	Laddingford PTA Christmas Tree Orders	
19-21	School Gambia Art Fair @ St.Peter & St.Paul's Church	
19th	Preview to meet the artists (£5 per ticket)	7-9.30pm
20th	FREE entry to view art exhibition	10-5pm
20th	Laddingford Christmas Fair @ The Chequers	3pm onwards
20th	Laddingford Christmas Tree Switch On	5pm
21st	FREE entry to view art exhibition	11-3pm
20th	Christmas Lights & Fair at the Chequers	5pm onwards
26th	Quiz Night @ The Venetian, Little Venice	8pm
29th	Laddingford PTA - Last Orders for Christmas Trees	pick up 3/12

DECEMBER

4th	Yuletide Market	5pm onwards
6th	The Garden Society @ The Village Hall	7.30pm
8th	Collier St Pop In Cafe St.Margaret's Church	2-4pm
11th	Christmas Tree Festival	1-5pm
11th	Race Night @ The Venetian Little Venice	8pm
12th	Baptist Church Carol Service	10.30am
12th	Christmas Tree Festival, Baptist Church	1-4pm
12th	Children's Party @ Yalding Church	2pm
13th	Wreath making @ Yalding Church	6pm
14th	WI Meeting - Wreath Making	7.30pm @ Village Hall, Yalding
15th	Carol Service @ Laddingford Church	7pm
18th	John's Grand Draw @ The Venetian	8pm
19th	All age Nativity @ Yalding Church	10am
24th	Christingle @ Yalding Church	4.30pm
24th	Midnight Mass @ Yalding Church	11.15pm

For more details regarding these events,
please look throughout the magazine.

If you have an event you would like us to cover, please send
details to mag@yaldingchurches.co.uk

YALDING GARDEN SOCIETY UPCOMING EVENTS

Monday, 1st November	8pm	Sustainable Gardening Talk by Blooming Green
Monday, 6th December	7.30pm	Christmas Party, Talk & Quiz at the village hall
Monday, 2nd February	8pm	A-Z of Roses by Simon White of Peter Beales Roses (zoom talk)
Monday, 7th March	8pm	AGM & get together at the village hall

For further information on our events and enquiries regarding joining the Society, please contact:
Lois 01622 814889, Joy 01622 814509 or Jane 01622 815569



Laddingford Primary School

Are you looking for a school place for September 2022?

Come along to one of our open mornings on Friday 5th or Monday 22nd November from 9.30 – 10.30am. You will be shown around the school by some of our students, have an opportunity to hear more about what we do from the Headteacher and ask any questions you may have.

Laddingford is a small nurturing Church of England Primary School at the heart of a rural community. Our warm, family atmosphere is underpinned by our Christian values: Love, Joy and Peace. Come along and see for yourself!

To help us with planning we would be grateful if you could call the office on 01622 871270 and let us know which session you will be attending but if you don't get chance to book, you are still welcome to turn up on the day. We look forward to meeting you.

Parent Survey 2020

"The use of google classroom was highly effective during this period of remote education. The assemblies created a real sense of community"

Forest School

"My child was one of the first groups to be involved and gained so much from his experience"

"I absolutely love Laddingford School. All of the teachers are approachable and deal with any problems effectively and efficiently. They are a kind and caring school and my children are extremely happy there."

Headteacher:

Mrs Gemma Hitch

Laddingford St Mary's Primary

Darman Lane, Laddingford,

ME186BL

01622 871270

office@laddingford.kent.sch.uk

Find Us on Social Media

@LaddingfordCEP



Collaboration and negotiation are the order of the day out on the playground with our 'loose parts' play.

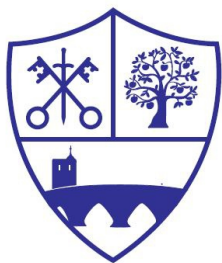
The new school year is off to a flying start!

It's been a few months since we contributed to this lovely mag – the summer holiday throws off the routine a bit! In the time since I last wrote, things have been getting busier and busier in school with everything back up and running more normally – it's wonderful to feel and hear the hustle and bustle again!

The highlights of the first term are many and varied but most certainly include; our Ancient Greek's topic and experience day, a visit from Maidstone museum with their wonderful historic toys, new playground markings and equipment to make free time more engaging, our harvest festival and the 'Learning Fair' where parents come in to see their children's learning. Forest school has once again been a joy with Reception children in attendance each week – you can see more about this on the forest school blog on our website.

Behind the scenes teachers have been working on refining parts of our Geography and History curriculum to make it as relevant and engaging as possible, we are continuing our work with the Kent maths hub and other schools have been visiting us to get ideas by seeing our nurture provision in action. Phew – no wonder we're ready for half term! I can't wait to see what Term 2 brings.

Mrs Hitch



Yalding St Peter and St Paul
Church of England Primary School

Yalding St Peter and St Paul CEP School

Yalding School is a friendly and successful school. We have a unique setting with engaging, bright and inspiring classrooms and extensive outdoor learning spaces.

Our vision is to provide a caring and engaging learning environment which nurtures the well-being and aspirations of all members of the school community.

Our mission is to develop learners who are curious, motivated, creative, co-operative, persevering and independent.

Our school website has lots of information, including a short film and virtual tour video on the Home page.

www.yalding.kent.sch.uk

Headteacher: Mrs Sarah Friend

Yalding St Peter and St Paul
CEP School,
Vicarage Road, Yalding,
ME18 6DP
01622 814298

office@yalding.kent.sch.uk

Find Us on Facebook



Yalding Primary School

Superheroes

As part of their project, Year 2 had lots of fun with their superhero afternoon. They created masks, came up with team names and completed different tasks which involved team work.



Bikeability

Year 6 have had the opportunity to participate in Bikeability Cycle Training which teaches them how to master the basic skills of riding on the roads.

All of the pupils were successfully and achieved Level 2.

Forest School

Year 5 have begun their Forest Schools sessions. They used tools to clear some of the site, decorated a tree with natural items, built their own swings and balanced on a tight rope.

Harvest Festival

On Friday 1st November, the whole school visited St Peter and St Paul Church for our Harvest Service.

Each class performed either a song, poem, story or prayer and we sang together.

All of the generous donation will be sent to The Community Storehouse Foodbank in Paddock Wood.



If your child's fourth birthday is between 1 September 2021 and 31 August 2022 and you are looking for a Reception school place, for September 2022, come and enjoy a tour of Yalding St Peter and St Paul School.

You can book a place on one of the following dates:-

- Tuesday 2nd November at 13:30,
- Thursday 4th November at 10:30
- Tuesday 9th November at 13:30

Log in to <https://www.eventbrite.co.uk/> and search for Yalding or follow the links on the Home page of the School website <http://yalding.kent.sch.uk/>

Mrs. S. Friend- Headteacher

EXTRACTS FROM RECENT PARISH COUNCIL MEETINGS

POLICE MATTERS

The redeployment of Police Community Support Officers (PCSO) has now been scrapped, with the exception of two urban officers. However, there is a proposal to group officers to give them more support. Ward Cluster meetings have been set-up by the Community Safety Unit at MBC together with the Community Safety police inspector. Yalding is in Ward Cluster 6 along with the parishes of Headcorn, Ulcombe, Boughton Malherbe, Staplehurst, Marden, Collier Street, and Nettlestead. Yalding PCSO, Nicola Morris, is still on sick leave, but we are hoping she may be back before this goes to publication. She has had an operation on her knee.

AFFORDABLE RURAL HOUSING FOR LOCAL PEOPLE

The Chairman briefed Councillors on MBC's approach to rented Affordable Housing; this is not the way the scheme was meant to be. It will mean people with no connection to the area can be moved in, especially where there is a right to exchange in the rental agreement. Yalding Parish Council has no interest in joining a scheme that does not guarantee local homes for local people. It will support a scheme for shared ownership which seems to be the way that the Rural Housing Trust now proceeds.

YALDING ENTERPRISE PARK (Former Syngenta site)

The S106 agreement has now been signed and the formal outline planning permission has been issued.

MAIDSTONE BOROUGH COUNCIL LOCAL PLAN REVIEW

The Regulation 19 consultation was presented to Full Council on 6th October and should be in the public domain between the 29th October and 12th December.

EXTERNAL AUDITOR REPORT - AGAR SECTION 3

The External Auditors' report is complete with no issues and no action is required from the report. However, they did suggest that insurance claims should be netted off, something we used to do but were criticised for!

TO AGREE TO PURCHASE A WOOD-CHIPPER FOR LAND CLEARANCE

It was resolved unanimously to purchase a wood-chipper with a budget of up to £5000.

SPONSORED PARISH VAN

Orchard View Garage, Hampstead Lane, has offered to sponsor a van for use around the Parish. A big thank you to Mark Newman. The van is operational and will be sign written on 19th October.

UNSPENT COVID DONATIONS

It was resolved unanimously to transfer the unspent Covid-19 donation monies of £1,339.35 to the Relief in Need Fund, one of the Yalding Charities. The Church had previously agreed to do the same and SG confirmed that this is in progress.

OPEN SPACES

The Lees – it was agreed to install a second bollard at the entrances furthest from the village. We will try to find the organisers of The Marden Drive to perhaps make an agreement, as with the religious travellers, for the use of the field as part of their fundraising activity.

Jubilee Field - Installation of goal posts nearing completion.

The Tatt

The Land Registry has not yet completed the reissue of the title deed to YPC. This will be chased.

The rubber matting needs to be removed. Medway Valley Countryside Partnership (MVCP) has prepared a report on the use of this area. A site meeting is to be arranged to discuss this plan along with the condition of the road surface, the cutting back the vegetation and to agree to pass area to KG for the administration of works.

The Kintons

There was damage caused by an away football player to the ground; the football club are trying to find a name.

William Bird has agreed to do a regular mole-patrol.

Transfer of woods and track from Countryside – Still awaiting paperwork from Countryside's solicitor. Our solicitor has reported that all he has received is the title plan for the transfer; he is drafting the transfer deed and has asked if there are any rights of access etc that should be added, It was agreed that we must ensure hedges and ditch are included.

To approve the MVCP Management Plan and subsequent actions – KG has started to clear the area. The Management Plan will be discussed at a site meeting.

DEFIBRILLATOR AT THE KINTONS

Yalding & Laddingford Football Club has purchased a defibrillator and would like it to be used by residents as well as the sports clubs. It has been agreed that YPC will purchase a cabinet that will need an electrical supply and site it on the lamppost at the top of the track on Vicarage Road. A very big thank you to Steve and Liz Faulkner.

HIS GRATITUDE MUSIC FESTIVAL

Following a meeting with the festival manager and an informal meeting with three of the officers of HIS Charity (Help, Information, Support for men with mental health issues www.hischarity.org.uk), most of the Council's concerns regarding the content of the proposed festival have been addressed and permission has been granted for a two-day festival in mid-August 2022 on The Lees, provided the funding is in place by January. CALPAC have given consent for the use of its field also. The founder of the charity lives in Yalding.

HIGHWAYS

The KCC Highways' Engineer will be chased regarding the reinstatement of the cobbles at Kingsland Cottages and the water on Vicarage Road that is running onto the track. The Chairman has spoken to the traffic light engineer about the sequencing of the traffic lights on Twyford Bridge. The sensor on the car park side had come loose and was tracking the path of every aircraft rather than cars. They are back to simultaneous red in both directions when nothing is coming. He has raised the sensor slightly on the car park side to try to pick up vehicles that stop short but the white line needs to be moved back. It will be added to the portal.

FLOODING

Substation Lyngs Farmhouse - UKPN are ignoring all correspondence as is the landowner of Curley's old yard so it was agreed to ask Helen Grant to re-raise the issue on our behalf.

Road Closures – It was agreed to readdress the possibility of installing metal gates to block off the road during heavy floods using money held in hand.

Increased Capacity of the Leigh Flood Storage Area - The Scheme now has Ministerial consent and work can now commence on the scheme. A newsletter giving an expected timetable will be sent out by the EA shortly.

QUEENS PLATINUM JUBILEE CELEBRATIONS 2022

Dates for the Diary with more details to follow:

- Thursday evening 2nd June Torch lit parade and beacon lighting in Yalding High Street, road closed
- Friday 3rd June Street Party in Yalding High Street, road closed
- Saturday 4th June Picnic on The Lees

PLAYSCHEME 2022

Play Place did a sterling job in 2019 and the clerk really does not have time to administer a scheme. It was therefore agreed that Play Place be booked for 2022, subject to a venue being available. The School now use the hall as a classroom so there may be some logistical issues, The Clerk will go and look at the school and make a recommendation.

CORRESPONDENCE

General; Special edition of the Kent PCC's Newsletter - Violence against women and girls; KCC Member Briefing on the Environment - September 2021; Oast to Coast; Kent Plan Bee August 2021 Newsletter.

Letters of Complaint - Several years ago, black and green bins suddenly appeared at Swan Place on the footway outside their properties. YPC complained to MBC on the grounds that they were in the heart of the Conservation Area, adjacent to an Ancient Scheduled Monument and a Listed Building and blocking the footway at a crossing point. Kent County Council Highways agreed. MBC did not support this despite YPC offering a place on The Tatt for the bins. This year, the MBC Conservation Officer reviewed the Yalding Conservation Area Appraisal & Management Plan and insisted that the bins be removed. The Clerk pointed this out to MBC who then removed the bins without notice to the residents (three properties). MBC subsequently sent the residents a letter, the tone of which is very unprofessional, offering no explanation and essentially blaming YPC and offering no solution. The residents have quite rightly written to us to complain. The day before the bins were removed, YPC had written to MBC to offer again The Tatt for storage; this letter has been ignored. The Chairman to write to the Chief Executive Officer of MBC to explain the background and the parish council's offer for the bins to go round the back on The Tatt. We will also write to the residents explaining the situation and telling them we will try to get the black and green bins back on the condition that they are kept on The Tatt and put out on the correct day.

DIFFUSION TUBES

Diffusion tubes have been placed at eight locations throughout The Parish. The tubes are changed every four to five weeks and sent off to a laboratory for analysis of the content of Nitrogen Dioxide to monitor air quality.

ASSISTANT CLERK

In 2019 it was agreed to appoint an assistant clerk to support the current Clerk in order to free up time to obtain the Certificate in Local Council Administration (CiLCA) Qualification. Due to Covid-19 restrictions the position was never filled. It now seems sensible that someone is recruited who might like to increase their hours as the current Clerk reduces hers as she moves towards retirement and that it is the assistant clerk who might take the qualification with a view to becoming full time. An advert will be prepared.

NEXT MEETING OF YALDING PARISH COUNCIL

The next monthly meetings will be held on **Tuesdays 2 November and 7 December 2021 and 18 January 2022 at 7pm** at Yalding Village Hall. **There will be no February meeting.** All members of the public are welcome to attend but, if you wish to address the Council on any subject, you must please advise the Clerk on 01622 814134 or email to clerk@yaldingparishcouncil.gov.uk at least twenty four hours in advance of your intention to do so and the subject matter. If more than one person wishes to speak on any matter, a spokesperson will need to be appointed. We are not permitted to discuss items that are not on the agenda so, unless the issue is urgent or in respect of a planning application, Councillors may agree for it to be placed on the agenda for the next Parish Council meeting.

PARISH DATABASE

To receive current information on flooding issues, road closures, lost and found, Parish Events and other news, please email chairman@yaldingparishcouncil.gov.uk with your name and address details. We do not keep a record of your address and the database is kept on an encrypted drive that is password protected. We do not share you details with any third party.

Paddock Wood Community Advice Centre



Family Advice

Our dedicated team of volunteer advisers are on hand to provide advice and information for families about all types of issues, including;

- Time off and pay when you have or adopt a child
- Child Benefit
- Support for separated families
- Support for disabled children
- Help with childcare costs
- Free school meals or using Food Banks
- Eligibility for welfare benefits
- Debt & money advice or personal budgeting support
- Welfare benefits

Our experienced Welfare Rights advisers can advise you about applying for DLA if your child is under 16 and has difficulty getting about or needs much more looking after than a child of the same age without any condition/disability.

Debt & money advice

If you are struggling on a low income, we can help you to maximise your income, learn about budgeting, deal with problem debt, or apply for free school meals or help with childcare costs.

We are authorised and regulated by the FCA to provide debt counselling, have an insolvency-service approved Debt Relief Order Intermediary, and can put clients into a Breathing Space Scheme.

Support for separated families

If you are experiencing a relationship breakdown, we can explain your rights and responsibilities, and help you to sort out arrangements for your children, or property and finances.

We can also help you to access other services.

How do I get help?

Our offices are OPEN for face-to-face advice (appointments and drop-ins) Monday to Friday, 9:30 – 1:30. Telephone and video appointments or email advice are available for those unable to attend our offices.

Contact us on:

info@pwadvice.org | 01892 838619
94 Commercial Road, Paddock Wood, Kent, TN12 6DP



THE YULETIDE MARKET IS BACK - SATURDAY, 4TH DECEMBER FROM 5PM

Arguably the village's most successful event, the Yuletide Market began in 1999 and grew in popularity each year until Covid prevented it in 2020. Plans are well underway for its return this year – barring any further government lockdowns or significant restrictions.

We have a great many new residents since 2019 and welcome them with open arms to join the existing band of loyal supporters and the many who travel from far afield to be here on that day.

The Market begins at **5.00** when **Father Christmas** switches on the lights on the village green. It finishes at **8.00** but the **High Street is closed to traffic between 4.00 and 9.00**. Over 40 stalls selling crafts, food and refreshments line the High Street verges, the Church is open and there is a variety of street entertainers. The entrance fee of "at least 1p per person" is a mandatory licensing requirement!

The Market is non-profit-making but supports local charities and aims to break even through stallholders' fees and from sales at the bottle raffle stall.

In November every house in the village was invited to contribute a bottle to this stall and many were donated through dropping them off at the Post Office.

Donations over the years have been amazing, but the Market could not run.

Further details will be given over the coming weeks but

please keep the date free and join in this marvellous event.

AN APPEAL

The Yuletide market is planned and staged by an enthusiastic group of local volunteers who are well supported by the Parish Council.

In addition to this core team there are lots of options to get involved!

We would love to hear from you if you're able to donate your time and ideas in the following operational areas of the event:

- Stewarding the road closure, this works on a rota basis and involves traffic management at each end of the High Street
- Helping with litter picking and tear down at the end of the evening (from 8pm)
- Being on the bottle stall team – are you a dab hand at selling raffle tickets and dealing with the public?
- Helping with the movement of items on the day (we need gazebos, tables, ladders, lights, cables to be in the right places)

If you want to help in some way please contact Jason Bryant on jason.bryant1968@btinternet.com



YULETIDE MARKET WORKING PARTY UPDATE

The Yuletide market is planned and staged by an enthusiastic group of local volunteers who are well supported by the Parish Council. Plans are well underway for this year's return. We are observing some small challenges which you, the great Yalding Parish community, might just be able to help us with!

Volunteers – **we still need people to help on the day itself**, especially with road closure stewarding. If you can help, please contact Paul Mahoney or Jason Bryant.

Helping with litter picking and tear down at the end of the evening (from 8pm). Turn up on the day and make yourself known to one of the high vis crew.

Being on the bottle stall team – are you a dab hand at

selling raffle tickets and dealing with the public?

Contact Joe Westgate.

Helping with the movement of items on the day (we need gazebos, tables, ladders, lights, cables to be in the right places).

We believe because of the pandemic a number of businesses have stopped trading in 2020, so we still have room for stalls. If you or someone you know wants to offer goods at the market (the more variety and seasonally focused the better), please get in touch with:

Clare Curley Tel: 01892 730744 Email: clare@curleyuk.com

If you want to help in any way please contact Jason Bryant on jason.bryant968@btinternet.com or 07887 686392.

YULETIDE MARKET PROGRAMME OF EVENTS

Yalding Yuletide Celebrations 4th December 2021 - 4:45pm to 8pm Yalding High Street, Yalding, Maidstone.

The 'must do' Christmas event!

An annual Yuletide market organised by community volunteers back for the first time since 2019.

Look out for Father Christmas, Punch & Judy and the local schools. Be amazed by the Samba drumming band, marvel at the traditions from the Morris Dancers and enjoy a sing-along!

Live entertainment in the High Street.

Estimated timed program shown here (subject to amendment) with location mentioned in brackets:

- 4.45 Pre-School children carol singing (War Memorial)
- 5.00 Father Christmas arrives!
- 5.15 Hartley Morris Dancers (War Memorial) and Yalding School choir (Forge)
- 5.30 Punch & Judy (High Street)
- 5.45 Laddingford School choir (Forge)
- 6:00 Samba Band (High Street)
- 6:15 Punch & Judy (High Street) and Hartley Morris Dancers (Forge)
- 6.30 "Copertine" vocal musical group (Forge)
- 7.00 Christmas Carols (Yalding Church) and Punch & Judy (High Street)
- 7:30 Samba Band (High Street)
- 8:00 Market closes!



The market will open from 5pm, offering a range of seasonal items, fresh produce, gift ideas and traditional Christmas staples including plants and trees. A number of local craft producers will also be displaying their wares. Remember to try your luck at the Bottle stall!

You will find the fairground near to the Forge, with attractions for all ages of kids.

Visitors will also be able to enjoy a seasonal array of hot and cold food and alcoholic & non-alcoholic drinks, with something to tempt all palates, and most of it is locally sourced so quality is assured! Food will include a Hog roast, locally produced pork sausages and burgers, traditional German sausages, Brittany crepes, fish and chips and much more. This year we will also have outside bars offering a choice of quality beverages for consumption at the market.

The High Street will be completely and safely closed to traffic on the night so bring the whole family, meet some friends, and join in this most enjoyable annual community event.

See local press and keep an eye on www.yaldingfarmersmarket.co.uk for more details and location.

There will be a mandatory market admission fee (it's completely up to you what you want to contribute, no minimum) payable on the day, this is a council licensing requirement. The market event is strictly "not for profit" and run by local volunteers.

We look forward to seeing you there!

Press contacts – Jason Bryant 07887 686392,
Victoria Bryant 07850 318314,

YALDING YULETIDE MARKET BOTTLE DONATIONS

WILL YOU HELP US, PLEASE?

We need donated bottles for the Yalding Yuletide Market's Bottle Stall on Saturday 4 December 2021

The BOTTLE STALL has always been a vital part of the Yuletide Market. It's proceeds make an indispensable contribution towards the general running costs of the market, including the street entertainers who enliven the market, and without it we would certainly run at a loss.

Every year without fail the generosity of local residents in donating bottles has ensured the success of this stall.

In issuing a warm welcome to all the village's new residents we hope that they will join with existing ones in supporting the Market in this way.

We ask everyone who is willing to make such a donation to drop bottles off at the Post Office during the working day at any time during the month of November.

Bottles of any kind will be welcome, but not tinned or packaged food, please.

If you are willing to donate but would find it easier to receive a house call to collect your donation, please leave a note to this effect at the Post office, with your address and phone number.

Any help and support you can give in keeping the successful Bottle Stall going will be very much appreciated.

Yuletide Market Committee

FRIENDS OF LADDINGFORD SCHOOL

What do Smarties, Christmas Trees, Calendars, Fruit and Veg and Santa have in common?

Friends of Laddingford school of course!

September 2021 brought us all back with a bang!

What a term this has been so far. We have had our first ever smarties challenge which has raised a phenomenal **£401.52**.

So thank you to all the children for eating the chocolate and all the adults who donated!

On the 21st October, we held our Learning Fair with a bake sale and our Bag to school pick up day. Don't worry if you've missed this one as we have these twice yearly. Please like our facebook page **@friendsofladdingford** to find out when the next one is and what other fun events we are up to.

We would like to say a **BIG thank you** to our wonderful Village pub – The Chequers for giving the proceeds of the annual fruit and veg show to us to support our school. Not only this but they will also be holding our fantastic **Christmas Fair** from 3pm on the 20th November.

Please do come along. There is fun for all the family including; **Santa's grotto**,

If you would like to book a spot for the grotto please e-mail laddingfordfriends@gmail.com for your space - all children are welcome.

There will also be the chance to enter our fantastic auction and raffle, alfresco Christmas carols and the beautiful sight of the whole village being lit up....

if that wasn't enough it will also give you the opportunity to purchase some great gifts and at least one of the Christmas staples.

It will be our 5th Year selling our amazing Christmas trees which can be pre ordered at the fair or by e-mailing **laddingfordchristmastrees@gmail.com**

Thank you to all who purchased them last year. Your lovely comments about the quality of the trees were amazing. The premium Christmas trees will be delivered to the school **Friday 3rd December**. We can also offer a delivery service to your home on this date too.

Our first ever Laddingford School calendar was such a success last year that we will be creating another. The theme for this year is Teddy's on tour. The children will take pictures of their Teds doing adventurous things and the calendar will be published by a professional printer and sold at the Christmas fair as well as other outlets in the run up to Christmas.

What a great gift this will be for friends and family. Each page will be sponsored by local businesses. If you would like to sponsor a page please get in touch by e-mailing laddingfordfriends@gmail.com All profits as with the Christmas trees will go to the school.

So as we change from autumnal days to chilly nights we look forward to celebrating the festive season with you all and hope to see you at our Christmas Fair. As always, thank you all for your support. Cheers!




Friends of Laddingford School



*I got my Christmas Tree from
Friends of Laddingford School
- I've decorated it with dog treats....*

Helen Grant MP for Maidstone and the Weald

I am here to help you in any way that I can. If there is an issue of concern to you, where you believe I can assist, or if you would like to arrange a meeting with me, please email me at **helen.grant.mp@parliament.uk** or telephone **020 7219 7107**.

 **helengrant.org**
 **[@HelenGrantMP](https://twitter.com/HelenGrantMP)**
 **[helen-grantMP](https://www.linkedin.com/company/helen-grantMP)**



Produced by
Helen Grant MP,
House of Commons,
London SW1A 0AA

St. Peter & St. Paul's Church, Yalding



Children's Christmas Party

Sunday 12th December, 1pm - 3pm



PLEASE JOIN US FOR OUR ALL AGE NATIVITY SERVICE

19th DECEMBER at 10.00am

please join us for breakfast at 9.30am

Carol Singing at Yuletide

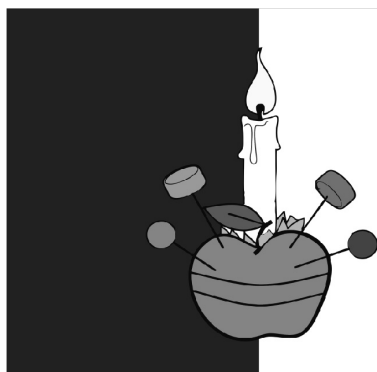
4th December
from 6.30pm



Carol Services

15th December at 7pm
Laddingford Church

19th December at 6pm
Yalding Church



Christingle Services

Christmas Eve

3.00pm & 4.30pm

more details in next months magazine and via the church
website www.yaldingchurches.co.uk & Facebook page
www.facebook.com/yaldingchurches

W & H MONCKTON - HAULAGE CONTRACTORS



After Henry (known as Harry) Monckton left the Royal Flying Corps he decided he would go into the haulage business. In the 1920's, he and his brother Walter started W & H Monckton Haulage Contractors and were based originally in Mereworth but moved by the time this picture was taken to Yalding next to The Two Brewers Public House.

A very convenient location and The Two Brewers was a very popular watering hole for many members of staff including Harry & Walter. The picture featured last month on our front cover is the first of three lorries loaded with Hop Pockets - there are about 50-60 on each lorry and this consignment was ready to be transported to London. The year? 1934.

And behind the wheel - Harry Monckton, father of Tony Monckton who at 91 years old still lives locally and has been invaluable with telling the story of his family's company which ran from the 1920's to finally stopping in the 1980s.

After delivering the hops to the London Markets for the beer trade, they would return with spent hops for

fertiliser. The main fertiliser manufacturer was Plant Protection which was located in the now derelict site opposite Little Venice.

It then became ICI and Syngenta.

Tony worked for Roots Car Manufacturing in Maidstone and married Janet in 1957, so was not part of the company at that time. However, in the 1960's he was lured back and the photos here were his pride and joy.

Many people in Yalding will remember that Moncktons moved from next to The Two Brewers to Nightingale Farm on Benover Road and they employed many drivers from the local area.

Unfortunately, during the 1980's it was decided to fold the company due to various reasons. Road haulage as we know now has enormous lorries which are very expensive to buy and to run and the area needed to house these large lorries needs also to be extensive.

The small companies driving locally were gradually pushed out which as we are finding out now, huge commercial haulage companies can also be problematic as hiring qualified HGV drivers is at the present time a difficulty.



Monckton staff and the oldest Monckton vehicle photograph

FOND MEMORIES OF W & H MONCKTON HAULAGE CONTRACTORS

Re your article in the Yalding & Laddingford October magazine about Monkton transport, they were a very well run and respected company which operated from a depot to the rear of the Two Brewers pub in Yalding until the early 1950s when like other hauliers in the country were nationalised and became British Road Services. Wally Monkton lived in one of the houses opposite the Two Brewers towards the towards the Lees , but I cannot remember which one, and Harry lived at the Nightingale Farm along the Benover road. When I was a lad I lived at New Barns farm Benover, myself and other lads used to go into the Hole in the Wall public house which was right next door to the Nightingale and Harry Monkton and his father in law used to come in and would talk to us.

With regards to the sacks on the lorries they were known as pockets of hops, and in my school days my father worked on a farm at Collier street which grew fruit and hops and I observed how to load hops before I was 14, I became friendly with one of the drivers of our local haulier and used to travel with him a lot and take hops to London. After I completed my national service I became a regular H.G.V driver and loaded and took many hops to London - that was after de-nationalisation in 1954.

Eric Crundwell.

> Hi in reply to your question regarding the photograph in the October issue.

> I believe Monkton was a local haulier, although not sure.

> However the lorries featured are loaded with hop pockets, weighing between 70 to 90kg each.

> They are most likely coming from a local grower and could be on their way up to Borough Market in SE London, where most of the hop factors/ merchants were based, also the hop exchange was there (think of the stock exchange but for hops). The building is still on Borough High Street. It has large iron gates with ornate hops on them.

> Hop pockets were loaded one layer at a time using a signal rope, the rope would be tied around the front pocket , then the rest of the pockets would be laid on top of it until the last on, when the rope would be slung around it and the next layer would be put on top of it.

> The clever bit was when the second layer was completed the rope was lashed around the end pocket in a kind of slip knot, that tightens the load as the pocket is slung over the back.

> This would continue snaking up the load until the vehicle was fully loaded.

> This method of loading hops was also used on articulated vehicles up to fairly recent times.

> And I'm sure that some hop growers still load this way.

> The two ropes you see tied at the front would have been used for added security, but the signal rope running through the middle of the load was the main support.

> This skill was passed down from driver to driver.

> I hope this make sense as it's quite involved.

> My knowledge comes from working at the Hops Marketing Board, as a hop sample examiner in the late 70s up to the mid 80s.

Mark Keen, Laddingford



A G Reg lorry from Tony Monckton's time at Nightingale Farm, Benover Road, Yalding

The Editor: Thankyou to everyone who contributed to this article - I've enjoyed learning about the history of Yalding and I hope you have too.

The hop pockets loaded onto the lorry were made of hemp or jute until plastic sacks took over.

Each were meant to contain 168lbs of dried hops. I filled a good number of them in September 1959 at Bodiam. A pocket could be rolled and handled by one man and stacked up ten layers high by two men. The photograph shows a load about 6 tons. The pockets had to have handles made by stuffing a handful of hops into the bottom corners and a tie placed to keep the handle firm. This was extremely hard on the hands against the rough cloth.

The pocket was then hung through a hole in the floor of the cooling room under a press. The press was a flat foot on a 9ft rack which fitted the pocket and was controlled by levers. The hops were shovelled from huge piles by a scuppet (a big cloth framed scoop with a handle) into the pocket for pressing. Six to ten fills and presses were enough to fill it. The pocket was then dropped to the ground floor to be weighed and labelled with the farmer's name, the parish, the year, the variety of hops and an individual number for unique identification.

Jonathan Virden



YALDING LIBRARY

Adin Coates House
High Street
Yalding, Kent
ME18 6HU

WE ARE NOW OPEN

Sunday closed

Monday	1pm-5pm
Tuesday	9am-1pm
Wednesday	9am-12pm
Thursday	1pm-5pm
Friday	1pm-5pm
Saturday	9am-1pm

SPREADING THE WORD

This is a summary of a report by **Alice Ryan** from the September issue of Waitrose & Partners Weekend on the campaign for racial equality in the UK's English Literature curriculum.

The Lit in Colour campaign for racial equality in the UK's English literature curriculum is making milestones. According to new research, fewer than 1% of British GCSE pupils currently study a book by an ethnic minority writer. Just 7% study one written by a woman and 0.1% by a black woman.

A collaboration between Runnymede Trust and publishers Penguin Random House, aims to redress the racial imbalance within school literature studies, from age 7 to sixth form, 'ensuring the books read in these formative years reflect the rich diversity of the society we live in'. Dr Halim Begum, director of Runnymede Trust says "to drive longterm change, the exam boards are vital". Dividends are already being paid, with the Oxford, Cambridge and RSA Board announcing the addition of poetry, a play and 5 new novels - including **Bernardine Evaristo's** Booker prize winning novel *Girl, Woman, Other* - to their GCSE and A-Level Courses. Pearson Edexcel has also updated its booklists and pledges to incentivise schools to change the texts they teach at GCSE and A-Level. The next step is the development of teaching resources.

As the first black woman - and the first black British person to win the Booker Prize, Bernardine Evaristo has become a high-profile advocate for literacy equality.

"By the time I was 19 I was reading the Nigerian writer **Buchi Emecheta** and **James Baldwin**, an activist and intellectual" she says. "You need people who work creatively with the culture and analyse. They showed me black stories were out there, but never my story. That is partly why I started writing myself".

"When you have black fiction, black writers, black stories, people assume it is about race and racism. I find that very annoying".

With 34.4% of students black, Asian or minority ethnic, it's vital says Suzanne Scafe, co-author of *Heart of the Race: Black Women's Lives in Britain*, that GCSE and A-Level syllabuses represent both them and 'the reality of the contemporary landscape'. Suzanne says the list of potential set texts is a long one including the following black British writers:

Zadie Smith's *NW*

Bernardine Evaristo's *Lara*

Girl, Woman, Other

Diana Evan's *26a*,

Caryl Phillip's *The Final Passage*,

Alex Wheatle's *Brixton Rock*,

Sunjeev Sahota's *The Year of the Runaways*.

THANK YOU FROM ALISON CRESSWELL

A heartfelt thank you to all our neighbours and friends for their help and kindness a month ago when I was knocked off my bike, and since. I had my hand held, George and the ambulance were swiftly informed, and a cordon placed around me against the traffic which would insist on continuing.

One lovely man - I'm sorry, I don't know your name - took on the role of policeman and directed the traffic away, to my great relief. Since then I've had so many flowers, cards, messages and calls from many of you, which have been so supportive and heartwarming. I am very grateful to be living in such a wonderful village.

Alison

YALDING ART GROUP

WWW.YALDINGARTGROUP.WEEBLY.COM



We've been gilding in gold, silver & copper.

Before moving on to studying Gustav Klimt, we looked at various pictures from Pinterest which had been embellished with gold, silver and copper.

How hard can it be, we thought to highlight our very own paintings! Very, is the answer, but it does look lovely when finally finished. Here is a tree landscape with metallic highlights - it is a watercolour by Jill and the first lesson we learnt was - watercolour paper hates having metallic highlights.

It is, of course very porous and the binding glue used loves to soak itself in and not adhere to the metal leaves which just love to fly around the room, but not actually stick to the paper. As you can see here though, Jill finally managed it and it looks lovely.

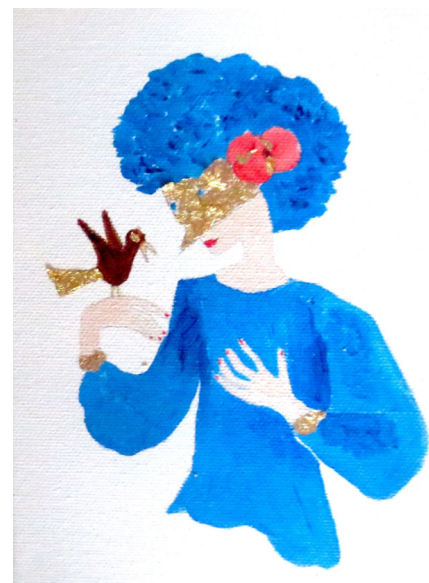
Well done Jill!

We then moved onto canvas boards and it became a little easier. Only marginally however!

I've always admired a little picture on my wall by Rosina Wachtmeister of a modern style harlequin girl holding a bird. Parts of it are gilded in gold, so I thought I give it a go. What large blue hair she has! I am pleased with it however, so we will move onto Klimt with a little more knowledge and try to do his work justice. Watch this space!!

If you would like to join Yalding Art Group, we meet every Thursday (mostly!) from 10am to 12pm with a break for refreshments at 11am. Each session is £3, but if you are not sure, why not just join us for a tea or coffee at 11am and get a feel for the group - we are a friendly bunch! We usually like to study a subject for 2 weeks and then we move on - sometimes with a relief and sometimes not!

We have lots of paper, pens, brushes, so just bring yourself. We are next to Yalding Post Office at Riverside, Lees Road.



CHRISTMAS TREE FESTIVAL

In 2019 Friends of Yalding Youth & Community Centre at the Baptist Church in Vicarage Road held our first themed Christmas Tree Festival. It was great!

It was always the intention to run the festival every two years, so we could concentrate on another fun raising event in between.

However, the global pandemic put a stop to all fundraising ideas, but two years have gone by and we are excited to be hosting the Christmas Tree Festival once again. Please look at the back page if you would like to enter your own Christmas Tree.

Not any old Christmas tree however!

A themed one - examples of trees entered in 2019 included a pottery tree from Hadlow Pottery, an iron tree from Yalding Forge and trees with designer baubles from the Book Club, Art Group and many more. The winner however, surpassed them all! Yalding Cricket Club thought long and hard about their tree and a very impressive 6ft tree made from cricket bats with cricket ball baubles won all the votes from the visiting public.

So, put the weekend of the **11th and 12th December** in your diaries and immerse yourself in our hall of Christmas trees and vote for your favourite whilst eating mince pies and having a drink.

We will be open 1-5pm on Saturday and 1-4pm on Sunday.

Our Christmas Carol Service starts at 10.30am on the Sunday - everyone is welcome and it is truly special surrounded by all the trees.

We promise a warm welcome and we are looking forward once again for some really inventive decorations. If you are part of a community group or business, please enter a tree - it is £10 per tree which will go towards the improvement of the hall for all users.

Make our large hall a wonder for all to see. The winning tree will win a £20 gift voucher donated from Yalding Post Office who of course will be entering their own Christmas Tree.

See you there.

Friends of Yalding Youth & Community Centre

NEWS FROM LITTLE VENICE

Good weather, bad weather and Little Venice is carrying on regardless. It is in glorious colour as our gardens are thriving from all the love and attention they have received over the past few months. I have decided to focus this month on our social club The Venetian.

A recently held race night raised an amazing **£451**. Brilliant! The next one is being held on **11th December at 8pm**. It would be wonderful to see you there and I am challenging you all to raise even more money. Christmas and New Year are not too far away now and the following will be taking place. **John's Grand Christmas Draw** will take place at 8pm on **Saturday 18th December**. There will be 90 prizes and the tickets are already on sale at 50p each. All the proceeds will be spent in prizes. This is always a fun night. On **Christmas Eve** there will be a **disco** and on **New Year's Eve** there will be a **party** with entertainment. On **Christmas Day** a **three course dinner** with a glass of wine will be available for £30 per head. This must be booked in advance

with a £10 deposit. Every Thursday evening there is a Pool competition. The draw takes place at 8pm.

The **last quiz night** of the year will be on **26th November** starting at 8pm. This is light-hearted and fun and it would be nice to see some new teams

That's this year's entertainment wrapped up. Have fun and stay safe out of lockdown in style by doing what Little Venetians are darned good at. We partied! Many of us joined Ian Peacock in the Clubhouse to celebrate his 70th birthday. A good night was had by all.

There are several new owners here now. Welcome to all of you! I am sure you have all discovered what a friendly, welcoming place this is. The Club is the place to go for Bingo, Darts and Pool. Food, including Thai is always available. You can also visit for breakfast on a Saturday and a roast on a Sunday (please pre-book to avoid disappointment). Well, another month gone and lockdown may be over, but please continue to stay safe. *Sally*



Our new Christmas cards have arrived!

2 designs by 2 Yalding artists for School Gambia available from
Yalding Post Office or call 01622 814027 or
email derekandclarehudson@gmail.com
packs of 10 for £3.75

Be sure to order early - we ran out last year!

ART

EXHIBITION AND SALE

Friday 19th – Sunday 21st November 2021
Yalding Church ME18 6DR

Friday 19th November - Meet the Artists

7pm to 9.30pm

Entry £5 includes a glass of wine

Saturday 20th November

10 am to 5 pm

Free Entry

Sunday 21st November

11 am to 3 pm

Free Entry

IN AID OF



FRIENDS OF YALDING SURGERY

GRAND CHRISTMAS DRAW

- | | |
|-----------|-----------------------------|
| 1st PRIZE | Luxury Food & Drinks Hamper |
| 2nd PRIZE | Champagne & Gin |
| 3rd PRIZE | 6 Bottles of Wine |

PLUS OTHER PRIZES

Live Draw taking place at 12 noon on 12th Dec at
Yalding Village Hall
Tickets £1 EACH

Thank you for supporting

Friends of Yalding Surgery (charity Number 1000163)



<http://friendsofyalding-surgery.sumup.link/products>

Please scan QR code to
purchase tickets

Christmas Trees

We will again be selling Christmas trees to help raise funds for the club. Thanks to all those who took part last year: the feedback was tremendous, and we look forward to providing your trees again.

We have expanded activities this year, and are working with other local cricket clubs and with Yalding & Laddingford FC to raise funds. We have launched a website (www.trees4sport.co.uk) to make it easier to locate us and buy your trees.

Trees will be distributed or are available for collection on Sunday 5th December. Please email trees4sport@gmail.com if you would like further information. Most people in the parish should also receive leaflets which will give full details.

Other Fundraising

We will also be present at the Yuletide Market selling cookies, and have a few other initiatives which will launch in the next few months.

This is a really important drive to raise funds for sport, especially for children, in the parish. Our immediate goal is to raise £4000 towards a necessary renovation of the playing surface. After that, we are saving towards renovation, and a possible rebuild, of the pavilion.

Every pound donated will be matched by an incredibly generous offer from a friend of the club, so now is a real opportunity to make your contribution count. Please see our fundraising page at [gofundme.com/f/yaldingcc](https://www.gofundme.com/f/yaldingcc). Of course, your Christmas tree purchases will also count towards this effort.

We do know that in these straitened times, and with a global pandemic, cricket might not be your first concern. But the club has been providing a sporting outlet to the people of Yalding for over 200 years.



For a small village, we really do punch above our weight; and the opportunity that the club provides for people of all ages to get involved with the game is outstanding.

Please lend us your support.

End of Season Results

The U15s won their final games to finish third in the table, despite winning more matches than anyone else. This was an outstanding achievement in a league that contained clubs like Mote and Sevenoaks Vine. All the players should be incredibly proud.

The senior team left it late to avoid relegation, but good wins against Rodmersham and Holborough in the last two games saw them to safety.

It was particularly encouraging that the match winning performances came from younger players. Over the season, Matthew Masset (24 wickets), Justin Gregory (22) and Sam Faulkner (20) ably led the attack, while Kiran Gregory (318 runs) and Sam Tripp (280) were top scorers. The fact that all these players have come up through the youth system and are all under 20 bodes well for the future.

YOBz v Yalding Young Dads

The traditional season finale took place in September, with Yalding Old Boyz eventually seeing off a spirited challenge from Young Dads. Special mention must go to Craig Cooper, who scored a cultured 50 for the YOBz, and a spectacular catch by Malcolm Wakefield to dismiss YOBz captain Tony Bray. The other highlight was an impromptu break in play to get some ice creams. Thanks Steph!

If you would like to know more about how to get involved with Yalding CC, please contact Martin on martin.tripp.cricket@gmail.com

TESTON & WATERINGBURY PRESCHOOL



Welcome back to all our children and families to what will be a very exciting term 2.

This term we will be exploring the book 'Dream Snow', by Eric Carle. Children will delight in this book as it embraces the magic of Christmas and the value of giving and sharing with others.

Our small group phonics classes will be starting this term for our school leavers.

As well as learning their letters and sounds it also helps them to work well with others, understand instructions, being patient and waiting their turn, and having the

confidence to speak in front of others.

This term will also see the return of our 'clever finger' activities to help with their fine motor skills such as their pencil grip.

If you are interested in joining our pre-school, please contact Tina Driver on **07805 796353** or email on tandwngroup@gmail.com.

Weekdays 8am - 4pm Saturday 8am - 2pm Sunday 8am - 11:30am



Barista Coffees
Homemade Cakes
Sandwiches and Toasties

Speciality Teas
Organic Soups
Pastries

PRE-ORDERS WELCOME 07794 233 513 call or TEXT
yaldingtearooms@gmail.com

Under new ownership. Drop in and have a taste!

impact
decoration

**Painting & Decorating - Interior & Exterior
City & Guilds Qualified
Dulux Select Approved Decorator**

Fully Insured
Domestic & Commercial Clients
Virtually Dust Free Sanding
Wallpaper Hanging

Sam Gregory
07882 597433 - 01732 873726
www.impact-decoration.co.uk info@impact-decoration.co.uk

YALDING TAXIS

Competitive - Personal - Professional - Reliable

- Friendly, local, family-run business with many years' experience excellent working knowledge locally, Kent, London, southeast
- No journey too short or too far
- Whole of Kent covered for long distance runs (Airports, Seaports, London etc.)
- 24-hour service, 365 days a year (advance bookings)
- Very competitive rates and no extra charge after midnight
- Lady drivers available
- All major credit and debit cards accepted
- Vehicles with up to 16 passenger seats
- Modern, clean, comfortable fleet - fully licensed and insured
- All drivers police checked and licensed
- Business and personal accounts welcome

01622 81 43 43
mike@yaldingtaxis.co.uk

FINE FINISH

CARPENTRY & JOINERY

**All aspects of carpentry
undertaken including:**

- Kitchens
- Wardrobes
- Flooring
- Panelling
- Hand Cut Roofing

**A fully qualified and professional service
with over 25 years experience**

Yalding Based

www.finefinishcarpentry.co.uk

Contact: John Aldrich

01622 816747 / 07973 439957

WHITES LANDSCAPING

**SPECIALISTS IN DRIVES, PATIOS,
FENCING and GARDEN DESIGN**

Your local hard landscaping company.

**Extensive portfolio and references,
free no obligation quotes and advice**

Garden and Drive design and construction
including drives, patios, fencing, brick-work,
turf, artificial grass and all associated
outdoor work.

Maidstone 01622 962646

Staplehurst 01580 891079

Mobile 07986 843903

Checkatrade.com

REGISTERED & FULLY INSURED

www.whiteslandscaping.co.uk

west kent

**FENCING & LANDSCAPING
CONTRACTORS**

01892 838752

ANDY
07841 643184

SEAN
07973 403624



ascruickshank@btinternet.com
www.westkentfencingcontractors.co.uk



GlassAlisa



*Explore the Magic of Glass
Connect through Creativity*

*****Glass Art & Craft Workshops*****
Right here, in Laddingford!

☎ **07976 165294** 🌐 GlassAlisa.co.uk

Also available:

★ Gift Vouchers ★ Home Craft Kits ★ Unique Gifts ★

“Simply the Best” *The Old Forge*

The Old Forge Cattery

*Luxury boarding cattery
in Laddingford*

Contact Sandy King
on 01622 871330



Cattery

Email: Cats@theoldforgecattery.co.uk
Website: www.theoldforgecattery.co.uk

G.H DECORATORS AND BUILDERS

for all your Property Maintenance needs

*Professional Painters & Builders since 1989
covering the South East & Kent*

Tel: 01622 813947 / 07539 216932

Email: ghdecorators@hotmail.com

Computer Problems?
*Quality Home and Business
support*

Any computer related
issues please do not
hesitate to contact
Warford Computers:

Mobile
07722 293187

Email
info@warford-computers.co.uk

Facebook:
Warford computers

**No call out charge, NO
FIX NO FEE, £30 Per Hour**

*Your complete
Architectural
Services under one
roof*

TAD STUDIOS Ltd



Tailored Architectural Design Studios Ltd

Complete friendly Architectural design service
to suite everyone's needs

- Planning applications • Property extensions • New Houses
- Garage conversions • Loft conversions • Annexe designs
- Small developments • Building Regulation Drawings

Allan Robinson

01622 872081 / 07900 564987

ajr@tadstudios.uk.com / www.tadstudios.uk.com



DessoMech Bike Repairs

A common sense and affordable approach to
bike servicing and repairs

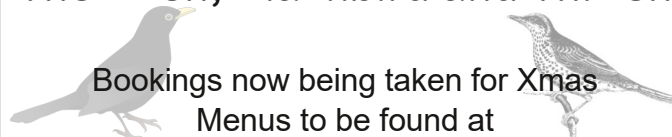
Professionally qualified and insured

Doorstep collection and delivery

07598 225195

dessomech@icloud.com www.DessoMech.com

The Bush, Blackbird and Thrush



Bookings now being taken for Xmas

Menus to be found at

BushBlackbirdAndThrush.co.uk

info@BushBlackbirdAndThrush.co.uk

Xmas Fayre - 1st Dec to 23rd December

Xmas Day - 25th December

Telephone: 01622 871349

Bush Road, East Peckham TN12 5LN



YALDING VILLAGE CLUB

Mon-Fri 1pm - 11pm Sat-Sun 12noon - 11pm

☆ Food

☆ Live Music

☆ Pool

☆ Bar

☆ Dancing

☆ Snooker

Call Peter 01622 814123

*Venue for your Weddings, Parties, Wakes etc
Outside bars by arrangement*

Farleigh Cakes and Bakes

Bespoke cakes especially for you



**Celebration cakes and bakes created for any
occasion, designed in consultation with you.**

All dietary requirements catered for.

Please telephone Julie on 077393 12127 or email

farleighcakesandbakes@outlook.com.

see us on **Facebook** and **Instagram**



LION INSURANCE CONSULTANTS LTD

YOUR SPECIALIST HOME INSURANCE BROKER

QUOTATIONS AVAILABLE TODAY

- Mid & High Value Homes
- Contents Including Works Of Art & Jewellery
- Homes In Flood Risk Areas That Are Flood Re Qualifying
- Properties Of Non Standard Construction
 - Listed Buildings
 - Let Properties
 - Vacant Properties
- Holiday And Second Homes
- Option to add on family fleet

Tel: 01622 815011

Email: Fiona@lion-insurance.com

www.lion-insurance.com

Lion Insurance Consultants (Tonbridge) Ltd. Shingle Barn
Farm, Smiths Hill, West Farleigh, Maidstone ME15 0PH
Authorised and regulated by the Financial Conduct Authority



Dude and Arnette are a fourth generation family business. Our team specialises in oast cowl repair, construction and maintenance. Wherever you live in the UK, if you have a building with an Oast cowl (the distinctive chimneys on the top of Oast houses) then it's almost certain it will have been serviced by one of our family at some point in its life.

From royalty to business and regular homeowners, we have been the go-to oast house repair company for over seven decades.

Get in touch to find out how we can help you.

**Call us for a quote or advice on:
01622 725 898 / 07973 332 790
info@dudeandarnette.co.uk**

www.dudeandarnette.co.uk



**DUDE & ARNETTE
OAST COWL CONSTRUCTION**

ORCHARD VIEW GARAGE

Hampstead Lane, Yalding,
Maidstone, Kent ME18 6HG

01622 814204

ALL AVAILABLE AT ORCHARD VIEW GARAGE

Oil/Filter Service	Cam Belt Replacement	2 Wheel Alignment
Intermediate Service	Clutch Replacement	Bulbs & Wipers
Full Service	Tyres & Puncture Repairs	Fault Finding
Major Service	Engine Management Lights	Brake Fluid Changes



LOOK AT ALL THE CARS WE SERVICE...

Mercedes · BMW · VW · Audi · Fiat · Mini · Skoda
Ford · Land Rover · Mitsubishi · Citroen · Peugeot
Renault · Nissan · Toyota · Honda · Alfa Romeo
Vauxhall · Porsche · Jeep · Chevrolet · Volvo

...and all other makes

SERVICE BOOK ALWAYS STAMPED WHEN PRESENTED AND SERVICE LIGHTS EXTINGUISHED



Got a problem with your car? Blown bulb? Broken door handle or I've got a funny noise coming from somewhere! then give us a try, we will be only too pleased to help.

Years of experience come together at Orchard View Garage, you too can join our family of extremely satisfied long-term customers.

Mark Newman, Director

01622 814204

Prices valid from 1st March 2015



FREE LIGHTS CHECK Stay safe all year round

Taylor's Tails - Dog Groomer



City & Guilds Qualified - Fully Insured

taylor's.tails@outlook.com

07900 561336

YALDING

Primary Plumbing

All aspects of heating and plumbing works kitchens & bathrooms

Established over 30 years. Qualified installers

"Anything in the pipeline"

01622 820393 07930 758250

Phillips & Painter Ltd

All aspects of Brickwork & General Building

Small works to New Builds

Established in 1983

GARY or JOHN

Call 07876 243198 or 07799 691449

01622 813387

phillipsandpainterltd@googlemail.com



Steeped in history,
our pub was built in 1492

Originally a Yeoman's house
it became a pub in the 19th century.

Now a traditional pub, log fires & oak beams

Cask ales, delicious wines
and over 40 gins.

Friendly & efficient service.

**Open for wholesome lunches &
suppers**

Traditional and modern fayre.

01622 814266

WalnutTreePubYalding.co.uk



**All aspects of interior refurbishment
Since 1995**

Carpentry

Wood Flooring

Kitchen fitting

Decking

Partitioning

Patio awnings

Dry-lining

Fixed structures

Decorating

Fully insured

Based in Yalding

For free estimates contact Sam

Mob: 07984 628 903

Email: samjr75@btinternet.com



Paul Wakeling
Director

17 Blunden Lane, Yalding
Kent. ME18 6JQ

Telephone: 01622 817895
Mobile: 07702 167555
www.pdwplumbing.co.uk

PDW Plumbing & Heating

- All types of plumbing & gas central heating carried out
- Power Flushing
- 24 hour Call Out
- Free Quotations



ELM FENCING LTD

All types of fencing and gates supplied and erected.

Specialists in domestic, agricultural + Equine.

Please call

01892 838258

01622 871468



WWW.ELMFENCING.COM



Mel Boxall

Painter & Decorator since 1995

Professional service with
exceptional results

References available upon request

- | | |
|-------------|-----------------|
| • Interiors | • Wall Papering |
| • Exteriors | • Fully Insured |

For free estimates call:

07710 077 683

or email: melboxall@gmail.com

THE SHIATSU ROOM

YALDING

Shiatsu is a form of holistic treatment
using gentle pressure through the fingers
called acupressure.



MORE INFORMATION AND BOOKINGS

www.theshiatsuroom.com

call 07941 117 767

or request a leaflet

+ BRADFORD BATTERIES -

Batteries for Cars
Batteries for Commercial
Batteries for Agriculture
Batteries for Motorcycles
Batteries for Leisure

CML TRADING

Unit 1 Church Farm, Collier Street
Marden, Kent. TN12 9RT

Telephone No: 01892 730922

Email: msgodden@hotmail.com

Agents for

Varta Batteries

Pavillion Batteries

Southern Farmers Group

Free Battery & Alternator Testing

TOP2BOTTOM LTD



ROOFING SPECIALISTS & BUILDING CONTRACTORS

Friendly roofing and building company
based locally in Benover
**SPECIALISTS IN PERIOD &
LISTED PROPERTIES**

Established over 24 years and fully insured

Roofing - Tiled, pitched, flat, leadwork,
chimneys, PVC fascia/soffit /guttering

Building - Extensions, alterations, new build,
renovation works, conservatories, windows & doors

Paving and Decking - Patios, drives, landscaping,
drainage and groundworks

Maintenance and Improvements, General Repairs

Domestic and Commercial

Free estimates and advice

Call Mark on 01892 730299 / 07850 911322

info@top2bottom.co.uk

www.top2bottom.co.uk

Burnt Oak, Benover Road, Benover, ME18 6AS

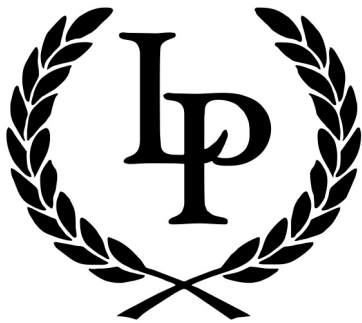
PATTENDEN

VET CLINIC



Your independent, family vet practice

Segro House, Pattenden Lane, Marden, Kent. TN129QJ
Tel: 01622 397900 Email: info@pattendenvets.com
www.pattendenvets.com



**Established
2007**

LAUREL PROJECTS

Painters



Decorators



07967 428 811

01622 831 272

Laurelprojects.co.uk
laurelprojects@btinternet.com

D.K. Plastering

**Plastering Contractor
All Work Carried Out
at reasonable prices**

**Call David on Mobile
07974 891 795**



TRADITIONAL AWARD WINNING VILLAGE INN

Good Quality Value for Money Menu
Real Ales, Selection of Wines

*During COVID restrictions we offer
Our Take Away Menu &
Delicious Takeaway Afternoon Teas*

Delivery may be possible in the Parish
for vulnerable or self isolating customers

Updates online and
at [Facebook.com/chequersladdingford](https://www.facebook.com/chequersladdingford)

01622 871266

www.chequersladdingford.co.uk

BLAKES

GARDENING SERVICES

- Garden Maintenance
- Grass Cutting
- Border Work
- Pruning
- Hedge Cutting
- Patio Cleaning



Contact Steve on:

07585 658 560

01622 934 638

steve1954blake@outlook.com

Local
Friendly
& Reliable
Service





Interiors Ltd

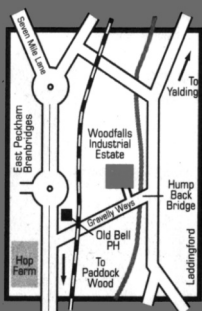
Painting & Decorating

Specialising in all aspects of painting and decorating work, including full refurbs.

bcdinteriorsltd@gmail.com
Phone : 07984 976627

LADDINGFORD

Garage Service Ltd



- Collection & Delivery**
(Railway Station or Home drop off/pick up FREE)
- Homestart & recovery**
- MOT's (No Re-Test Charge)**
Servicing from £37.50 + Parts
- Guaranteed Work carried out**
by fully qualified mechanics
- Full liability insurance**
- Welding and crash repairs**
- Full fleet maintenance**
available
- Electrical repairs and Full**
diagnostic testing
- Air Con Service**

For a prompt, polite, friendly service

Please come and see me or telephone

Ken Leary
01622 873020 (24 hr) or 07977 906577

OFSTED Approved Childminder

20 years experience

has vacancies for children from 3 months upwards
in a comfortable family setting in Yalding

Call Angela on 01622 814488
or email Wyatt-g@sky.com



CITY & GUILDS &
ADVANCED CRAFT

Nigel Dear

Painter & Decorator Internal & External
nigeldear@icloud.com
01892 664698 or 07710 798553

Camrass Wills

✦ KENT & SUSSEX ✦

Advice you can trust

Wills
Powers of attorney
Probate
Funeral plans

Help & advice
Home visits
All fees agreed
before you proceed

For a free initial consultation contact:

Peter Camrass DipPFS MSWW
01622 720985 or 07747 007971
www.camrasswills.co.uk

Coxheath Veterinary Surgery

6 Westerhill Road, Coxheath, Maidstone ME17 4DG

Patrick Tibbitts BVSc(Massey)MRCVS
Caroline McIlwaine BVSc(Pretoria)MRCVS



Professional Pet Healthcare in a
Bright, Caring, Friendly Atmosphere.
Modern Diagnostic & Operating Facilities.

Opening hours: Mon/Fri 8.00 am - 7.00 pm Sat 8.00 - 12 noon
Consultations by Appointment Only

For appointments and emergency cover **Tel: 01622 743888**

Atmosclear Building Services Ltd

Forstal Business Park, Paddock Wood TN12 6PY

We supply, install and maintain
Heating, Ventilation, Refrigeration and
Air-Conditioning systems

✉ sales@Atmosclear.biz
🌐 www.Atmosclear.biz
☎ 01622 816 820



Woolpack Inn

01892 730356

Benover, Yalding



Dave and Renata
Welcome you to the "Woolpack Inn"
Renowned for its good food and hospitality.

Fine Cask Beers & Lagers,
Home Cooked Meals & Bar Snacks
Large Gardens

24 Hour Emergency
Service
Home Visits
Private Chapel of Rest
Full Fleet of Modern &
Vintage Vehicles



Floral Tributes
Catering
Memorial Masonary
Pre-paid Funeral Plans
Repatriation



HENRY PAUL FUNERALS

Contemporary and Traditional Services



HEAD OFFICE
Pembury
01892 825505

FUNERAL DIRECTORS &
MEMORIAL SHOWROOM
Tonbridge
01732 605002

FUNERAL
DIRECTORS
Southborough
01892 458338

henrypaulfunerals.co.uk

Queenie's Dog Grooming & Spa
Your Pooch Treated Like Royalty

AT THE HOP FARM
01622 871861

QueeniesDogGrooming@gmail.com

LADDINGFORD COUNSELLING

Anxiety, depression, low self-esteem, addiction...

You deserve good mental health. We are here to help.

One to one counselling. We also offer:

Specialised Mental health workshops for companies,
schools, café's and more.

MBACP Registered
Sandy Paine: 07399 154471
Sara Ramlot: 07827 159577
www.laddingfordcounselling.co.uk
enquiries@laddingfordcounselling.co.uk

Contact for more information.

bacp
Registered Member 374972
MBACP

LITTLE
EDEN



01622 833088

Hairdressers and barbers
Colouring experts
Cutting and styling
Affordable prices

Fully qualified and experienced staff
Warm welcome and friendly service

LITTLE EDEN LTD, BANK HOUSE, CHURCH
GREEN, MARDEN, TONBRIDGE,
KENT. TN12 9HS



Yalding Tree & Hedge Services



All aspects of Tree Surgery

- Hedge Cutting • Stump Grinding
- Free Estimates and Advice • Fully Insured
- Over 20 years experience

Ross Taylor NCH ARB
01622 817678 or 07527 826864
yaldingtrees@outlook.com



Parkinsons

Appliance Services Ltd

07766 607251

Repairs / Sales / Service

Washing Machines, Dishwashers, Cookers, Ovens
Tumble Dryers, Storage Heaters Etc

Fast, Friendly Service



Kerry Mann BSc (hons) OST

Registered Osteopath

kerry.ostehealth@gmail.com

07958 705 797

**Structural and Cranial
Treating Adults, Children & Babies**
OSTEOPATH Reg 1997

www.eastfarleighosteopathy.co.uk

Yalding Surgery, Benover Road. ME18 6ES

296 Upper Fant Road, Kent ME16 8DA

The Essential Curtain Company

Email: theessentialcurtain@gmail.com

Tel: 01892730252 Mobile: 07813 750117

Specialising in hand stitched curtains, roman, Velox and roller blinds, and a variety of other soft furnishings.

I bring the shop to your home.

TRACEY BENTLEY

(Estimates are free)

Little Brittany
Crepes - Bespoke Catering for your event!
07850 318 314

Available for Festivals, Farmers Markets, Fetes,
Fayres and Private Functions including Weddings,
Engagements and Private Parties.

Contact us now to discuss your options

www.little-brittany.co.uk

PAUL'S CARPET CLEANING

**Professional Carpet, Upholstery
and Leather Furniture Cleaning
Stain and Odour Removal
Deodorise and Protect**

01622 813514

07950 053200

paulcarpetfresh@gmail.com

**Town & Country
WINDOW
CLEANING**

Family business
Est since 1982

- Domestic
- Light Industrial
- Office
- Contractual

**CALL STEVE ON
07747 334422**

KNOWLEDGE - CHOICE - HONESTY

KCH.life

body - aesthetics - skincare

Skincare specialist offering aesthetic
and holistic treatments and massage.

Visit the Nail & Brow bar at
Barsleys Department Store

or the salon in

Putlands Leisure Centre Paddock Wood TN12 6NZ

Contact Helen to book an appointment
or arrange a no obligation consultation
to discuss treatments that will benefit you.

T: 07724 026 964 e: info@kch.life
<https://kch.life>

Barsleys
DEPARTMENT STORE • PADDOCK WOOD

GUINOT
INSTITUT • PARIS

C Ladbroke Local Qualified Electrician

All types of Electrical work undertaken

Free Estimates

24 Hour Call Out

Fully Insured

Call Chris on 07860 181406

**LUCY ROBINS
& SCHOOL
OF DANCE**

STREET DANCE CLASSES
Yalding Youth Hall - Thursdays

3.45pm 4-7 years 4.45pm 13 years +

5.30pm 8-13 years

All suitable for girls and boys

www.lrsd.co.uk

07793 020601

hello@lrsd.co.uk



YOGA IN YALDING

All levels welcome!

Group, private and 1 2 1 classes
Covid safe, by Zoom and in Yalding

*Yoga promotes
Physical and Mental Wellbeing*

**Contact Natalie: 07813623266 or
hello@happynatyoga.com**

THE WHETSTED WORKSHOP

**All aspects of
building · roofing
joinery & carpentry**

TEL: 01892 832455

MOB: 07813362537

E: whetstedworkshop@yahoo.co.uk

David Terry PLASTERING

Professional plasterer in Maidstone. Established in 1996,
Offering affordable plastering and decorating solutions in
Maidstone.

Over 15 years' experience specialising in all aspects of
plastering and decorating,
offering a professional and friendly service for all your
home improvement needs.



www.davidterry-plastering.co.uk



01622 661 780 / 07971 919 694

FREE RECYCLING COLLECTION SERVICE

Why pay to have your old electrical items collected? Or queue at Tovil
Refuse Site having struggled to get them into your car?

We are a fully licenced service and will collect anything electrical or
electronic in any condition or size FREE OF CHARGE and fully recycle to
avoid land-fill.

*We are currently having to make a small charge for refrigeration, TVs and
Monitors

**Call Adrian and Penny Weaver-Coles - 01622 812928 07884
183541 or email info@wecollectltd.com**

Upper Tier Carrier Broker Dealer Registration no: CB/ZE5499VW



The George YALDING

The family warmly welcome you to our pub.



The family warmly welcome you
to The George, Yalding

Atmospheric family friendly pub,
outside events including a great garden
for many uses including new fishing
facilities and live music.
New children's playground.
01622 814376

Paul J. Rowland Funeral Directors Ltd 01622 757177

15 Mid Kent Shopping Center, Castle Road, ALLINGTON,
Maidstone, Kent ME16 0PU

01622 662661
4 Hillary Road, PENENDEN HEATH,
Maidstone, Kent. ME14 2JP

24 Hours A Day – 365 Days A Year
SERVING THE COMMUNITY OF ALLINGTON
MAIDSTONE AND THE SURROUNDING AREAS
We offer a full range of services and facilities,
Home arrangements at your convenience

Free car parking

Company Director: Paul J. Rowland

AN INDEPENDENT FUNERAL DIRECTOR

WOODFALLS

Office and Storage space for rental. Competitive rates
set in a well maintained rural setting. CCTV.
Good parking. Please contact for availability.

Tel: 01622 871378



PURFECT PAWS

Your local fully insured cat sitter
www.purfect-paws.com
purfectpawskent@gmail.com
Call Samantha... 07532 187123

JLP PERFORMING ARTS



BALLET ~ MODERN ~ TAP

www.jlpperformingarts.com

jlpperformingarts@gmail.com

☎ 07872 581 753

AT: The BAPTIST CHURCH
& YALDING VILLAGE HALL

"THE AERIAL MAN"

TV & SATELLITE AERIAL INSTALLERS

Your local family firm
Est for 38 years

01622 871614
01732 883542



Freeview



J L Buttigieg Tree Services
Arboriculture and Landscape Contractors

J L Buttigieg Tree Services

Tree Surgery
Landscaping
Fencing

Hedge Cutting
Grass Cutting
and more,

Yalding based Fully qualified and Insured

Free No Obligation quotes Year round Callout

Call Josh on 07718 592354
jlbtreeservices@gmail.com

ALL LOADS Ltd

SPECIALIST IN SUPPLYING AGGREGATES, TOPSOIL,
TURF, SLEEPERS, TO TRADE AND THE PUBLIC



All Loads is a family run business. Managing Directors, Ryan and James Latham have gained valuable experience within a family run haulage business, which has been operating for over 40 years.

We pride ourselves on ensuring outstanding customer service at all times.

We can supply aggregates, decorative aggregates, building materials, and recycled building and landscaping materials. We now also offer GRAB Loaders.

We will be more than happy to answer any queries you may have with regard to our products and services.



Aggregates

- Rock Salt
- Building Sand
- Sharp Sand
- Ballast
- Plastering Sand
- Reject Sand
- Type 1
- Pea Shingle 10/20mm

Horticultural

- Rock Salt
- Seasoned Logs
- Premium Topsoil
- Mushroom Compost
- Bark/Ornamental
- Woodchip/Mulch
- Turf
- Sleepers grade A
- Sleepers NEW Oak

Recycled Materials

- Blended Soil
- Bulk Bag
- Hardcore
- Crushed Concrete
- Concrete Fines
- Granite Kerbs

DELIVERY AVAILABLE TO : TUNBRIDGE WELLS, TONBRIDGE, SEVENOAKS, MAIDSTONE AREAS

*** SPECIAL PRICES ON BULK ORDERS ***



free local delivery
01622 873231



Email: aggregates@allloads.co.uk - www.allloads.co.uk

ALL LOADS LTD, Little Budds Farm, Gravelly Ways, Laddingford, Maidstone, Kent ME18 6BZ

David Gerrish Garden Maintenance



davidgerrish@hotmail.co.uk

07840 566343

ACCOUNTS FOR SMALL BUSINESSES

QUICKBOOKS EXPERT

individual tuition provided

Preparation of VAT returns: Book-keeping.
Friendly and professional service- stress free

For further details contact Catherine:

01622 872081 or 07900 568613



Children aged 2 - 4 years old

Yalding Village Hall, Lyngs Close
Monday through to Friday 8am – 3pm
01622 814024

admin@yaldingPreschool.co.uk

Charity number 1052236

Village Pensioners Club (VPC)

a club for the retired

Meetings fortnightly in Yalding Club - Tuesday 2-4 pm

For details contact: The Club on 01622 814123

Yalding Village Hall

All functions and Activities can be booked.

Kitchen available

Contact booking officer by email SueGerrish@gmail.com
(preferred), or phone 01622 814163

BODY CONTROL PILATES

Julia F. Russell

Body Control Pilates Instructor

01622 813550 - julia_russell21@yahoo.co.uk

I'm delighted to announce a new

Pilates Classical Mat class

starting September 2021 at the Baptist Hall

Mondays 9.45 – 11.00am. New clients are warmly welcome

My Weekly Zoom classes continue every
Tuesday, Wednesday and Thursday morning

Cedar Counselling - Karen Lambert

Qualified Counsellor

Specialising in Bereavement Counselling along with other issues, including:

Relationship problems
Work performance/issues
Anxiety and Stress
Lack of self-confidence
Coping with a chronic or terminal illness



07766 704 647
karen@cedar-counselling.co.uk
www.cedar-counselling.co.uk



BOE Pet Services

Professional, reliable, local dog walker.

Over 20 years experience.

Insured and canine first aid trained.

References on request.

Call Sarah on: 07772436234

RIXSON Heating and Plumbing

All heating & plumbing work undertaken

FREE QUOTATIONS

07957 636269

SCAFFOLDING

MT Scaffolding Services

**Please call Mark for a free quotation on
01892 825848 / 07770 947888**

Local professional business, with old fashioned core values
Very competitive pricing providing a reliable service
Fully qualified and insured with over 30 years' experience
Residential & Commercial Premises



The Small Business Champions

- Startup Advice
- Fixed fees Agreed in Advanced
- Companies / Partnerships
- Self Employed / CIS / Landlord
- Corp & Income Tax / PAYE / VAT

**Call for a friendly, free initial discussion without
obligation on**

01892 834411



IKD Kitchens and Bedrooms

Design – Manufacture – Installation

Local showroom:

6 Woodfalls Industrial Estate
Laddingford, ME18 6DA

Telephone: 01622 871190

Mobile: 07932 797576

Email: info@ikd-int.co.uk

Website: www.ikd-int.co.uk



MID KENT AESTHETICS CLINIC

Your face is safe in our hands



Non-surgical cosmetic procedures carried out by specialist doctors in our new clinic near Yalding. We use only world leading dermal fillers & anti-wrinkle therapy.

- * Dermal Fillers
- * Anti-Wrinkle Therapy
- * Facial Peels
- * Obagi Skin Care



01622 296247 07368 558831
midkentaesthetics@aol.com
www.mkaclinic.com

Pre-School based in Teston Village Hall



Open from 09.00am – 2.30pm Monday to Friday
Optional early morning drop offs at 08.30am

Quality pre-school care and education since 1966
Ages 2 years to School age.

15 hours free entitlement for 3 & 4 year olds
Approved provider of the 'Free for 2' funding scheme
Extended 30 hour entitlement available

All fully qualified staff

Activities tailored to each child ensured my child was ready for school in a way I could not have done myself
(Mum of a 4 year old)

Enquiries to: Tina Driver – 07805 796353
or email – tandwngroup@gmail.com

www.testonandwateringburypreschool.co.uk



Michelle Spittle
HUMAN RESOURCE SOLUTIONS

info@michellespittlehr.co.uk
07392 997028

- | | | |
|----|---------------------------------|----|
| >> | HR Shared Service | << |
| >> | HR Audit Controls | << |
| >> | HR Policy Review | << |
| >> | Recruitment and New Starters | << |
| >> | HR Plans and Objectives | << |
| >> | Absence Management | << |
| >> | Health and colleague well-being | << |

www.michellespittlehr.co.uk

Dragon Property Maintenance Services



Your local handyman based in
Yalding

Experts in all aspects of Garden and
Property Maintenance

See our website for details or call
01622 814854 / 07779 575663

www.dragonpmservices.co.uk

YALDING YOUTH CENTRE, VICARAGE Rd

Available for hire and ideal for children's parties
Two halls; main hall can take bouncy castle
Good kitchen facilities. Outside play area. Parking
Call Martin & Gail Johnson for details and bookings
01622 815498

PIANO LESSONS

For Children & Adults - Beginners to Grade 8
MARJORIE AYLING BA Hons., FTCL, ARCM.
T: 01892 835702 E: MarjorieAyling@outlook.com

Anita's Alterations

*Breathe new life into your wardrobe
From taking up a hem to re-shaping a jacket
Swift and professional service*
Call Anita on **01622 813460 or 07956 647614**

Yalding Parent, Baby & Toddler Group

Weekly informal get together for all pre-school ages and their carers

Term time Wednesdays 9.30am to 11.30am
Yalding Baptist Church

Just pop in and ask for Joanna, Katie or Sarah
e: YaldingTodderGroup@gmail.com for more info

Pizienwell Arts Framing & Gallery

You Create It
We'll Frame It
You Display It

Framing Repairs and Re-glazing undertaken

For free advice and quotes
come to the studio at

**Court Lodge Farm, Forge Lane,
East Farleigh ME15 0HQ**

visit www.pizienwellarts.com for opening hours
Tel 01622 728670 eMail info@pizienwellarts.com

TWO
BREWERS
CLOCKS &
ANTIQUES

SINCE 2017

***Your local Clock &
Watch Repairers &
Antiques Shop***

- Clock Repairs
- Watch Batteries
- Barometer Repairs
- Antiques
- House Clearances

Lees Road, Yalding, ME18 6HB
01622 817315
07767 777101
clocks1066@hotmail.co.uk
www.clockrepairs.net

**We make them
We sell them
We deliver them**

Bedz4Zzzzz
Retail Limited

**"Beds handmade
in Kent"**

www.bedz4zzzz.co.uk

HEDGEHOG CARE BY JACKIE AKHURST

Hedgehogs are one of our favourite British mammals, but our prickly friends need our help. We have lost about a third of our hedgehogs in the last 20 years.

There are lots of reasons for this, but one of the biggest is something we can readily do something about – expand their habitat. Hedgehogs live quite happily alongside us in towns and villages, but they need a large area to move around, in order to find sufficient food to survive.

Hedgehogs travel up to a mile each night on those little legs. Herein lies the problem.

Many houses have fences between the boundaries with no gaps for hedgehogs to squeeze under, thereby restricting the range in which they can find food. The solution is simple : **create hedgehog highways.**

You can do this by making a hole about 13cm by 13cm at the bottom of your fence, which will allow our prickly friends to pass through into the next garden. This is too small for most pets to squeeze through.

If you can't cut a hole, dig a channel under the fence and put a piece of piping into the hole to allow the hedgehog to pass through. Better still, swap some of your fence for a native hedge, which will not only let hedgehogs through, but provide a habitat for other birds and animals that share our gardens. Get together with your neighbours and see if you can create a hedgehog highway in your road.

There are lots of other ways you can help our dwindling hedgehogs:



- 1 Leave an area of your garden wild. It will provide nesting materials and insect prey for hedgehogs.
- 2 Leave out food and water. Hedgehogs love cat or dog food and a shallow dish of water. Never leave out bread or milk, as hedgehogs cannot digest these items.
- 3 Leave a log pile or invest in a hedgehog house to provide a safe nesting and resting site for hedgehogs.
- 4 If you have a pond, make sure it has an escape ramp as hedgehogs can get trapped in slippery, steep-sided ponds
- 5 Removing litter and tie up loose garden netting to prevent hedgehogs getting tangled and trapped.
- 6 Lawn treatments and slug pellets not only reduce invertebrate numbers, but may cause direct harm to hedgehogs
- 7 Check areas carefully before mowing or strimming to prevent hedgehog injuries.
- 8 Check bonfires before you light them to make sure there are no hedgehogs hiding inside.

THE TEARDROP FUND FOCUSES ON CLIMATE CHANGE

COP26 climate summit “This November, the UK will host the UN climate summit COP26 in Glasgow. Governments of practically every country will come together to make plans for tackling the climate crisis. Decisions made will affect us all – especially those living in poverty who bear the brunt of the climate emergency. Through prayer and action, we can all play our part in making this a significant milestone as we tackle climate change together.” www.tearfund.org

The Baptist Church in Yalding will be praying leading up to and during this event and then we invite you to join us on:

Sunday 21st November at 10.30am for our All Age service with a focus on “What does the Christian faith have to say about our responsibility for God's world and what is happening to the environment?”



YALDING & LADDINGFORD WOMEN'S INSTITUTE

It was lovely to see a good gathering for our second meeting since starting up and what a night!

We had our first speaker, Peter Chapman from Hari Covert. It was an amazing evening, where we learnt about different breads, dips and chocolate mousse. We then got to try all of the food! It was delicious.

Our next meeting is Tuesday 9th November at 7.30, where our speaker is Gatehouse Candles. We hope to see you there.

*Victoria
President of Yalding & Laddingford WI*

VILLAGE CONTACTS

CHURCH CONTACTS

Vicar - Father Paul Kish.....01622 814182
 Vicar@YaldingChurches.co.uk
 Churchwardens.....Please contact the Vicar
 PCC Treasurer01622 817919
 treasurer@yaldingchurches.co.uk
 Joint Parish Giving Officers
 Joy & Jonathan Virden01622 814509

Junior Church
 Rachel Curley.....01622 814159
 Bellringers
 Richard Young.....01732 669782
 Choir
 Daniel Sharman.....01892 723884

RC Church of St.Francis.....01622 756217
 Yalding Baptist Church
 Rachel Bushnell.....01622 817337
 Carol Featherstone.....01622 812838
 Little Fishes
 Rachel Bushnell.....01622 817337
 rachbush75@hotmail.co.uk
 Churchyard Working Party ("The Vandals")
 Paul Mahoney.....01622 814369
 Yalding Church Preservation Society
 Peter Chapman.....07973 839266

EDUCATION

Yalding School Head
 Mrs Sarah Friend01622 814298
 PTA: Emma Peskett
 chair@YaldingPTA.co.uk
 Laddingford School Head
 Mrs Gemma Hitch.....01622 871270

Yalding Library01622 817735
 Yalding Pre-School.....01622 814024
 admin@yaldingpreschool.co.uk
 Yalding Parent & Toddler Playgroup
 Joanna Geary01622 964468

HELPING HANDS

Volunteer transport for medical appointments
 Jenny G 01622 817439 Jane.....01622 814002
 Jenny S 01892 459041 Barbara01622 814038

PARISH COUNCIL

Chair: Geraldine Brown.....01622 814222
 chairman@yaldingparishcouncil.gov.uk
 Clerk: Angela Gent.....01622 814134
 clerk@yaldingparishcouncil.gov.uk

GOVT & LOCAL COUNCIL REPS

MP: Helen.Grant.mp@parliament.gov.uk
 KCC: Simon.Webb@kent.gov.uk
 Cllr: David Burton.....07590 229910
 Cllr: Annabelle Blackmore.....01622 833299
 Cllr: Claudine Russell.....To be advised

DOCTOR (NHS 111 non-emergency)

Burgess Bank Surgery01622 814380
 Friends of Yalding Surgery
 Elaine Andrews.....01622 816951
 PPG - James Guillum Scott.....01892 730308

POLICE

Emergency.....999
 Maidstone Rural.....101
 RSPCA Cruelty Line.....0300 1234 999

VILLAGE HALLS

Yalding V. Hall Bookings.....01622 814163
 Yalding Post Office.....01622 814327
 Youth & Community Centre01622 815498
 Laddingford Church Hall bookings01622 873450
 Yalding Church Rooms (Clare).....01622 814027

CLUBS & ASSOCIATIONS

Allotments: Susanna Barnwell.....01622 813309
 Art Group: June Chapman.....01622 817324
 Bee Keepers: Chris Morris.....07855 464667
 Cricket Club: Martin Tripp.....07961 100389
 Football Club: Steve Faulkner01892 263907
 Garden Society: Joy Virden01622 814509
 Relative Minors: H.Haddesley01622 749284
 Rifle Range: Dave Woodger01732 843813
 Table Tennis: Peter Camrass.....01622 720985
 Villlage Voices: Karen di Marco.....01622 745298

SCOUTS

Beavers (6-8), Cubs (8-10.5), Scouts (10.5-14)
 Sandra Grace.....01622 200555
 Explorer Scouts (14-18)
 Eleanor Mead.....07539 890093

CHRISTMAS TREE FESTIVAL

Saturday, 11th Dec 1-5pm &

Sunday 12th Dec 2021 1-4pm

Baptist Church, Vicarage Road, Yalding, ME18 6DP

Friends of Yalding Youth & Community Centre Fundraiser



Are you part of a local group or business?

If so, decorate a tree with your own theme and
join our Festival in aid of renovating and
improving our building!

£10 to enter & visitors will vote for the best one which will
receive a £20 gift voucher

Name of Group/Club/Business.....

Contact Name & Number.....

I enclose my £10 entry fee & will return this form to Yalding P.O

Tell all your friends to come to vote for the winner and there will be
lots of refreshments, cake and mince pies to help you decide!